

Original Research

# Granulocyte Colony-Stimulating Factor Mediated Regulation of Early Myeloid Cells in Zebrafish

Anna B. Meier<sup>1,2</sup>, Faiza Basheer<sup>1,3</sup>, Robert Sertori<sup>1</sup>, Miranda Laird<sup>1</sup>, Clifford Liongue<sup>1,3</sup>, Alister C. Ward<sup>1,3,\*</sup>

<sup>1</sup>School of Medicine, Deakin University, Geelong, 3125 Victoria, Australia

<sup>2</sup>Faculty of Science, University of Strasbourg, 67081 Strasbourg, France

<sup>3</sup>IMPACT, Deakin University, Geelong, 3125 Victoria, Australia

\*Correspondence: [alister.ward@deakin.edu.au](mailto:alister.ward@deakin.edu.au) (Alister C. Ward)

Academic Editor: Graham Pawelec

Submitted: 5 January 2022 Revised: 16 February 2022 Accepted: 24 February 2022 Published: 28 March 2022

## Abstract

**Background:** Colony-stimulating factor 3 (CSF3), more commonly known as granulocyte colony-stimulating factor (G-CSF), acts via a specific cell surface receptor CSF3R (or G-CSFR) to regulate hematopoiesis, with a particularly key role in the myeloid cell lineage where it impacts the development and function of neutrophilic granulocytes. Zebrafish possess a conserved CSF3R homologue, Csf3r, which is involved in both steady-state and emergency myelopoiesis, as well as regulating early myeloid cell migration. Two CSF3 proteins have been identified in zebrafish, Csf3a and Csf3b. **Methods:** This study investigated the roles of the Csf3a and Csf3b ligands as well as the downstream Janus kinase (JAK) and phosphatidylinositol 3-kinase (PI3K) pathways in mediating the effects of Csf3r in early myeloid cell development and function using gene knockdown and pharmacologic approaches. **Results:** This study revealed that both Csf3a and Csf3b contribute to the developmental and emergency production of early myeloid cells, but Csf3a is responsible for the developmental migration of early neutrophils whereas Csf3b plays the major role in their wounding-induced migration, differentially participated in these responses, as did several downstream signaling pathways. Both JAK and PI3K signaling were required for developmental production and migration of early myeloid cells, but PI3K signaling was required for emergency production and initial migration in response to wounding, while JAK signaling mediated retention at the site of wounding. **Conclusions:** This study has revealed both distinct and overlapping functions for Csf3a and Csf3b and the downstream JAK and PI3K signaling pathways in early myeloid cell production and function.

**Keywords:** CSF3; CSF3R; G-CSF; G-CSFR; myelopoiesis; migration; wound healing

## 1. Introduction

Granulocyte colony-stimulating factor (G-CSF), also known as colony-stimulating factor 3 (CSF3), is the principal cytokine regulating neutrophil development and function [1]. It plays a crucial role in myelopoiesis and particularly the emergency response to infection [2,3], and has also been found to be involved in the process of wound healing [4]. Recombinant G-CSF is used widely in the clinic as an important therapeutic agent in the treatment of neutropenia in patients undergoing immunosuppressive chemotherapy or suffering from certain congenital disorders [5].

G-CSF acts via a specific cell-surface receptor, called G-CSFR or CSF3R, expressed in a range of hematopoietic cells with a predominance in the myeloid lineage, as well as in some non-hematopoietic cells [3]. Binding of G-CSF triggers receptor homodimerization and the activation of various intracellular signaling cascades including the Janus kinase/Signal transducer and activator of transcription (JAK/STAT) and phosphatidylinositol 3-kinase (PI3K)/Akt pathways [2,3]. However, it remains unclear how individual pathways regulate the broad spectrum of biological activities promoted by G-CSF.

The zebrafish has emerged as a powerful model to study hematopoiesis, with strong conservation between zebrafish and mammals [6,7]. The zebrafish G-CSFR orthologue, Gcsfr or Csf3r, has been shown to be involved in both steady-state and emergency myelopoiesis, as well as regulating early myeloid cell migration [8–10]. Two G-CSF ligands have been identified in zebrafish, named Csf3a and Csf3b. These have similar predicted structure and ligand/receptor interaction sites but display differential spatial and temporal expression patterns as well as biological properties [11]. This study sought to further our understanding of ligand specificity in early myelopoiesis and myeloid cell migration mediated via zebrafish Csf3r through gene knockdown, including developmental migration of primitive myeloid cells and emergency myelopoiesis, and for the first time investigate the role of downstream signaling pathways in these processes using specific inhibitors.

## 2. Materials and Methods

### 2.1 Fish Husbandry and Manipulations

Wild-type, Tg (*mpx::GFP*) [12] or Tg (*lyz::DsRed*) [13] fish were maintained using standard husbandry



practices. Embryos at the 1–8 cell stage were injected into the yolk with approximately 1 nl anti-sense morpholinos diluted to 50 nM (4.1 ng) in 1× Danieau buffer (58 mM NaCl, 0.7 mM KCl, 0.4 mM MgSO<sub>4</sub>, 0.6 mM CaCl<sub>2</sub>, 5.0 mM HEPES; pH 9). Morpholinos (Gene Tools, Philomath, OR) used were: *csf3a* Mo: 5'-AAAAACCTCTTGGAACTCACCAGAC and *csf3b* Mo: 5'-CAGGTGTTAGTGTGTATTACCAGT [11], along with a *csf3r* Mo: 5'-TTTGTCTTTACAGATCCGCCAGTTC [8], and a scrambled control. (scr Mo): 5'-CCTCTTACCTCAGTTACAATTTATA. Embryos were also treated with inhibitors to JAK2 (AG490, 50 μM) and PI3K (LY294002, 30 μM) at 16 hpf for developmental studies.

## 2.2 In Vivo Analyses

Tg (*mpx::GFP*) and Tg (*lyz::DsRed*) embryos were visualized by fluorescence microscopy to allow quantification of myeloid cell numbers and relative migration. To simulate an emergency hematopoietic response, 2 dpf embryos were injected with 5 μg/mL LPS and analyzed 8 hours later, as described [8]. Wound-healing assays were performed by transecting end of the caudal tail fin of 3 dpf embryos with a scalpel after anesthesia with 0.1 mg/mL benzocaine, as described [13] and monitored for 8 h. Inhibitors to JAK2 (AG490, 80 μM), PI3K (LY294002, 60 μM) and Src (PP2, 5 μM) were added 1 h prior to injection or wounding, as appropriate.

## 2.3 Reverse-Transcription Polymerase Chain Reaction (RT-PCR) and qRT-PCR

Total RNA was extracted from ~50 zebrafish embryos using Trizol reagent (Life Technologies Australia, Mulgrave, Vic, Australia), converted into cDNA using iScript (Biorad Laboratories, Gladesville, NSW, Australia) and used as a template for PCR with Taq polymerase (Invitrogen Australia, Mt Waverley, Vic, Australia) in an iCycler thermocycler (Biorad Laboratories) and the following primers: *csf3a*: 5'-CGTTGTGTCTGCTCCTGTTCC and 5'-AGACAGCGACATTACACAGAGC, *csf3b*: 5'-AAGGATCCATCCGCACAGCAGCACC and 5'-CTGCGAGGTCGTTTCAGTAGGT, *csf3r*: 5'-CGGAGAAAATAATATACAGGGGG and 5'-TAAAGCGACAGTCACCAAATG, *mpo*: 5'-CTGCGGGACCTTACTAATGATGG and 5'-CCTGGATATGGTCCAAGGTGTC, *lyz*: 5'-CATGAATTCGGATGAGGCTGGCAGTG and 5'-ATCTCGAGGGTCAGGCTCGGAGGC and the control *actb* (beta-actin): 5'-TGGCATCACACCTTCTAC and 5'-AGACCATCACCAGAGTCC. Negative control templates were water and samples in with the reverse transcriptase was omitted. Quantitative RT-PCR was performed using SYBR Green, with expression normalized to *actb* and fold change calculated as  $2^{-\Delta\Delta C_t}$ , where  $C_t$  represents the

threshold cycle,  $\Delta C_t$  the difference in  $C_t$  between test and control genes, and  $\Delta\Delta C_t$  the difference in  $\Delta C_t$  between experimental and control groups [14].

## 2.4 Statistical Analysis

Statistical analysis were performed using Graph Pad Prism version 8 (San Diego, CA, USA). Student's *t*-tests were performed on the data, using the Holm-Sidak multiple comparison test where necessary.

# 3. Results

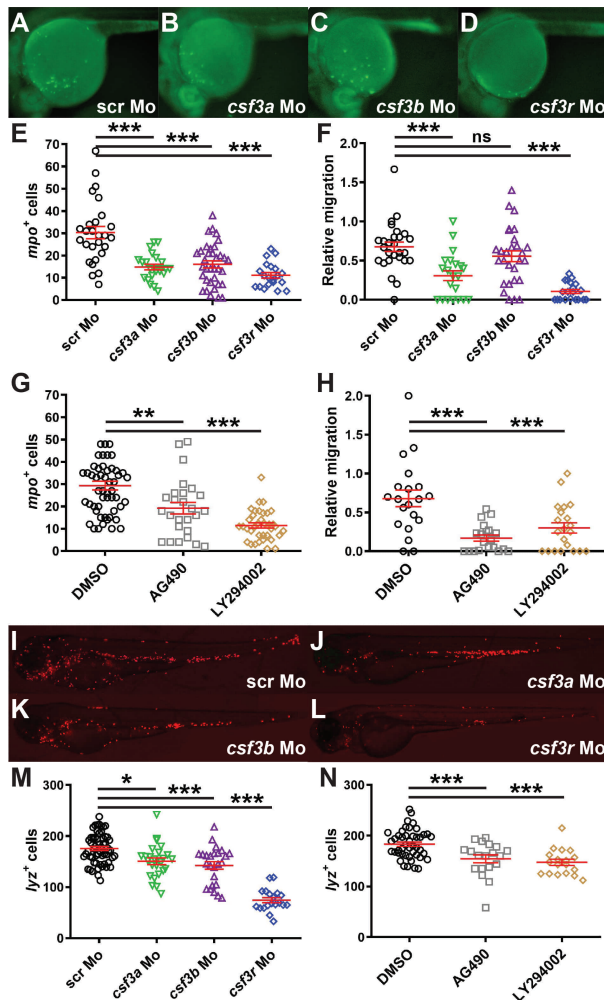
## 3.1 G-CSFR Pathways Involved in Early Myelopoiesis

We have previously shown that the zebrafish G-CSFR plays a key role in early myelopoiesis, with ablation of *csf3r* resulting in decreased numbers and reduced migration of primitive myeloid cells over the yolk sac [8]. To determine the contributions of the *Csf3a* and *Csf3b* ligands, embryos were injected with the published splice-site targeting morpholinos *csf3a* Mo or *csf3b* Mo [11], respectively, along with *csf3r* Mo [8]. Each robustly inhibited splicing, but produced no visible effect compared to a control scrambled morpholino (scram Mo) by light microscopy (data not shown). Knockdown of either *csf3a* or *csf3b* in Tg (*mpo::GFP*) embryos [12] resulted in a significant decrease in *mpo*+ myeloid cells at 22 hpf compared to control embryos, albeit significantly less than that observed following *csf3r* knockdown (Fig. 1A–E). This was confirmed by injection into Tg (*lyz::DsRed*) embryos [13], where both morpholinos significantly reduced the number of *lyz*+ myeloid cells, although again less than with *csf3r* morpholinos (Fig. 1I–M). In contrast, knockdown of *csf3a* (or *csf3r*), but not *csf3b*, was able to significantly decrease the migration of *mpo*+ cells over the yolk sac at 22 hpf (Fig. 1A–D,F). This suggests the two ligands have differential effects on early myeloid cell migration, but not production where they both make a contribution.

Key downstream G-CSFR pathways were investigated by treating embryos with specific inhibitors. Both the JAK2 inhibitor AG490 and the PI-3K inhibitor LY294002 resulted in significantly lower numbers of *mpo*+ cells at 22 hpf (Fig. 1G) and of *lyz*+ cells at 48 hpf (Fig. 1N) compared to control DMSO-treated embryos. Both inhibitors also reduced migration of *mpo*+ cells in treated compared to DMSO control embryos (Fig. 1H).

## 3.2 G-CSFR Pathways Involved in Response to Wounding

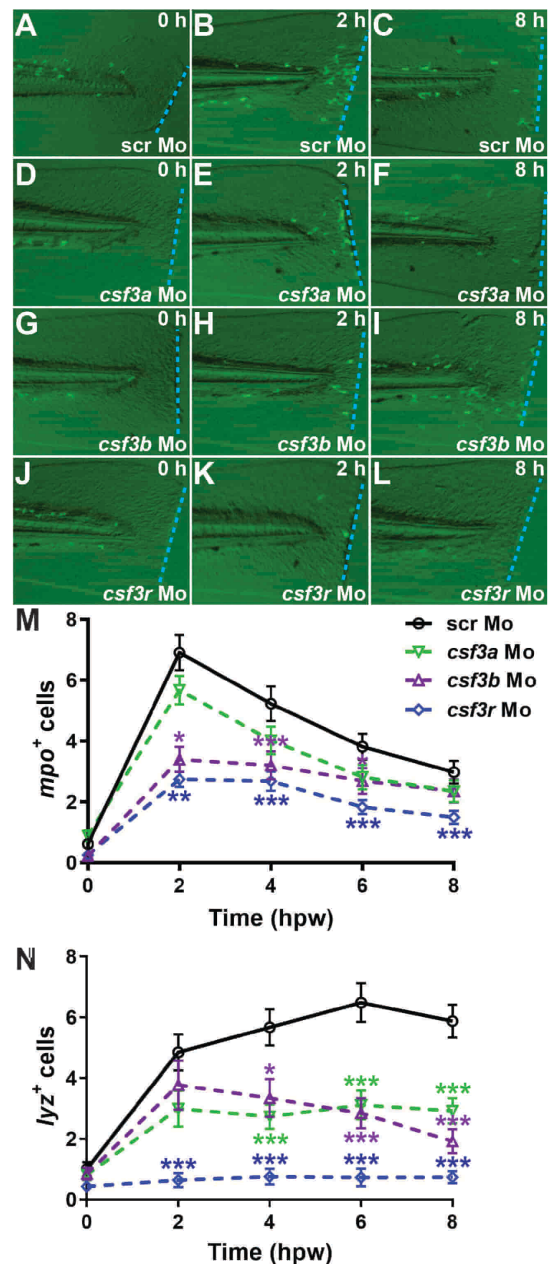
Neutrophils play a key role in the response to injury, and we have demonstrated that zebrafish *Csf3r* mediates retention of myeloid cells at sites of injury [8]. To determine the contribution of *Csf3a* and *Csf3b*, a tail fin wounding assay [8] was performed in Tg (*mpo::GFP*) and Tg (*lyz::DsRed*) embryos. Tg (*mpo::GFP*) embryos injected with scr Mo displayed an increase in *mpo*+ cells at 2 hours post wounding (hpw), which then declined (Fig. 2A–C,M). In *csf3a* and *csf3b* morphants the magnitude of this response



**Fig. 1. Alternative G-CSFR pathways in myelopoiesis.** (A–D) Fluorescent microscopy images of representative 22 hpf Tg (*mpo::GFP*) embryos injected with either scr Mo (A), *csf3a* Mo (B), *csf3b* Mo (C) or *csf3r* Mo (D). (E,G) Quantitation of the number of *mpo*<sup>+</sup> cells in embryos injected with morpholinos (E) or treated with specific inhibitors (G). (F,H) Quantitation of relative migration of *mpo*<sup>+</sup> cells in embryos injected with morpholinos (F) or specific inhibitors (H). (I–L) Fluorescent microscopy images of representative 48 hpf Tg (*lyz::DsRed*) embryos injected with either scr Mo (I), *csf3a* Mo (J), *csf3b* Mo (K) or *csf3r* Mo (L). (M,N) Quantitation of *lyz*<sup>+</sup> cells in embryos injected with morpholinos (M) or specific inhibitors (N). In panels E–H and M–N, results are shown for individual embryos along with mean and SEM in red, with the level of statistical significance relative to controls indicated (\*:  $p < 0.05$ ; \*\*:  $p < 0.001$ ; \*\*\*:  $p < 0.0001$ ; ns, not significant).

was reduced, but this only reached statistical significance for *csf3b* from 2–6 hpw (Fig. 2D–I,M). The extent of reduction was greatest in *csf3r* morphants, which was significant across all time-points (Fig. 2J–M). The *lyz*<sup>+</sup> cell population peaked at 6 hpw in scr Mo-injected Tg (*lyz::DsRed*) embryos (Fig. 2N). The magnitude was again reduced in *csf3a*

and *csf3b* morphants, which reached statistical significance from 4–8 hpw, with *csf3r* morphants showing the largest effect across all time points (Fig. 2N).



**Fig. 2. Role of alternative G-CSFR ligands in response to wounding.** (A–L) Fluorescent microscopy images of representative Tg (*mpo::GFP*) embryos injected with either scr Mo (A–C), *csf3a* Mo (D–F), *csf3b* (G–I) or *csf3r* Mo (J–L) at the indicated times post wounding. (M,N) Quantitation of recruitment of *mpo*<sup>+</sup> (M) and *lyz*<sup>+</sup> (N) cells to the wounding site at 0, 2, 4, 6 and 8 hours post wounding (hpw) in Tg (*mpo::GFP*) and Tg (*lyz::DsRed*) embryos, respectively, that had been injected with the indicated morpholinos, showing mean and S.E.M. along with statistical significance of gene-specific in comparison to scr Mo (\*:  $p < 0.05$ ; \*\*:  $p < 0.001$ ; \*\*\*:  $p < 0.0001$ ; n = 26+).



Embryos treated with DMSO produced similar kinetics to scr Mo-injected embryos for both *mpo*<sup>+</sup> (Fig. 3A–C,J) and *lyz*<sup>+</sup> (Fig. 3K) cells. Interestingly, the JAK2 inhibitor failed to influence the initial recruitment kinetics of either the *mpo*<sup>+</sup> (Fig. 3D–E,J) or *lyz*<sup>+</sup> (Fig. 3K) cells, but showed decreased numbers of each at later timepoints (Fig. 3F,J–K). In contrast, the PI3K inhibitor impacted the early response (Fig. 3G–H,J–K), but its effects were abrogated at later timepoints (Fig. 3I–K).

### 3.3 G-CSFR Pathways Involved in Emergency Myelopoiesis

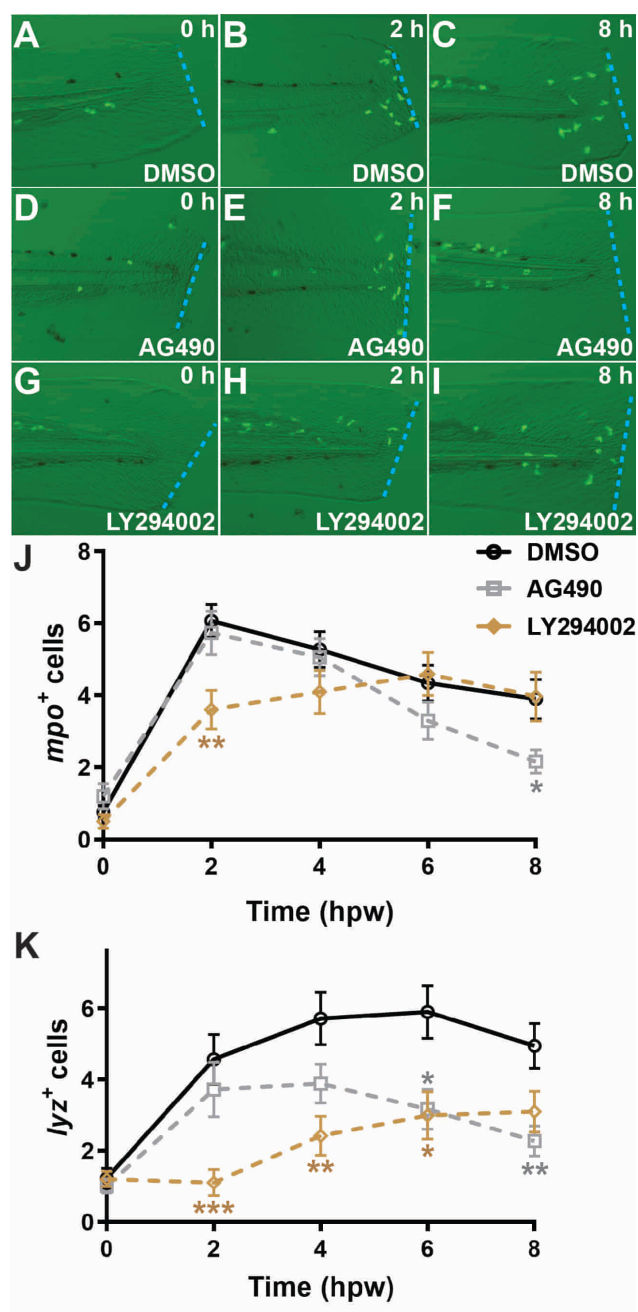
We previously showed that zebrafish *csf3r* contributed to the ‘emergency’ myelopoiesis stimulated by bacterial lipopolysaccharide (LPS) [8]. LPS stimulated *csf3a* expression by >4-fold but *csf3b* by a lesser extent (<2-fold) (Fig. 4A). LPS injection also resulted in a significant increase in the expression of both *mpo* (Fig. 4B) and *lyz* (Fig. 4C). This increase was abrogated in both *csf3a* and *csf3b* morphants, with co-injection of both morpholinos completely blocking their induction by LPS (Fig. 4B,C). This was confirmed in Tg (*lyz*::DsRed) embryos, which showed a significant LPS-mediated increase in *lyz*<sup>+</sup> cells in embryos injected with scr Mo (Fig. 4D,E,J), which was reduced in those injected with *csf3a* Mo (Fig. 4F–G,J), with no significant increase in those injected with both *csf3a* Mo and *csf3b* Mo (Fig. 4H–J).

LPS also significantly increased the number of *mpo*<sup>+</sup> (Fig. 5A,B,I) and *lyz*<sup>+</sup> (Fig. 5J) cells in DMSO treated embryos. Treatment with AG490 failed to prevent the LPS-induced increase in either population (Fig. 5C,D,I,J), despite fewer cells overall. In contrast, LY294002 blocked the increase in both *mpo*<sup>+</sup> (Fig. 5E,F,I) and *lyz*<sup>+</sup> (Fig. 5J) cells. The Src kinase Lyn has been suggested to lie upstream of PI3K [15] and contribute to G-CSFR-mediated proliferation [16]. Therefore, embryos were also treated with the Src kinase inhibitor PP2, which also blocked LPS-induced increase in *mpo*<sup>+</sup> (Fig. 5G–I).

## 4. Discussion

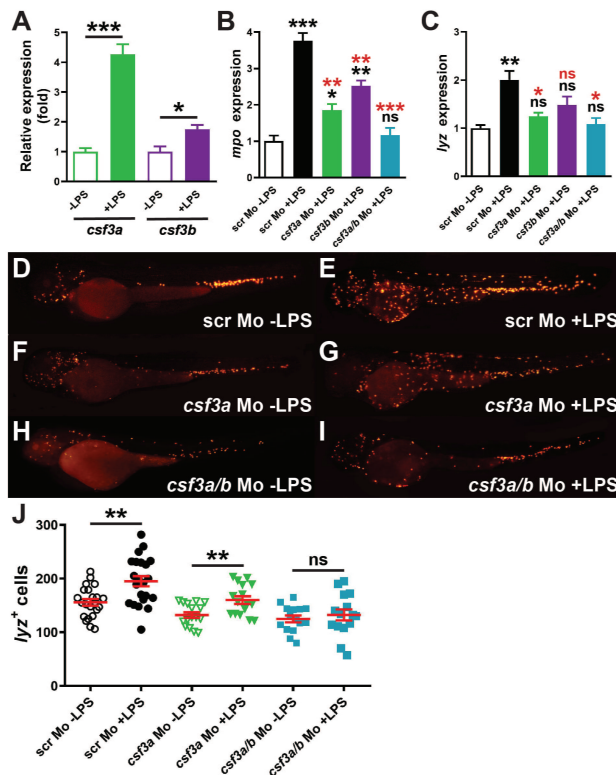
The zebrafish has emerged as an invaluable model to study all aspects of neutrophil biology [8,17,18], and associated diseases [10,19,20]. Since G-CSFR signaling is central to many of these, it is important to understand the relative roles of the two zebrafish ligands, Csf3a and Csf3b.

Zebrafish Csf3r has been shown to be required for the robust production of various early myeloid cell populations and the developmental migration of *mpo*<sup>+</sup> cells over the zebrafish yolk sac [8,10], with Csf3b previously implicated in some aspects [21]. The data presented here suggest that both Csf3a and Csf3b contribute independently to the generation of *mpo*<sup>+</sup> neutrophils and *lyz*<sup>+</sup> leukocytes, since ablation of either reduced these cell populations. Csf3r ablation had a greater effect, suggesting it blocks signaling by both ligands. In contrast, only Csf3a was required to me-



**Fig. 3. Role of alternative G-CSFR pathways in response to wounding.** (A–I) Fluorescent microscopy images of representative Tg (*mpo*::GFP) embryos pre-treated with either DMSO (A–C), AG490 (D–F) or LY294002 (G–I) at the indicated times post wounding. (J,K) Quantitation of recruitment of *mpo*<sup>+</sup> (J) and *lyz*<sup>+</sup> (K) cells to the wounding site at 0, 2, 4, 6 and 8 hours post wounding (hbw) in Tg (*mpo*::GFP) and Tg (*lyz*::DsRed) embryos, respectively, that had been pre-treated with the indicated inhibitors, showing mean and S.E.M. along with statistical significance of inhibitor in comparison to DMSO control (\*:  $p < 0.05$ ; \*\*:  $p < 0.001$ ; \*\*\*:  $p < 0.0001$ ;  $n = 15+$ ).

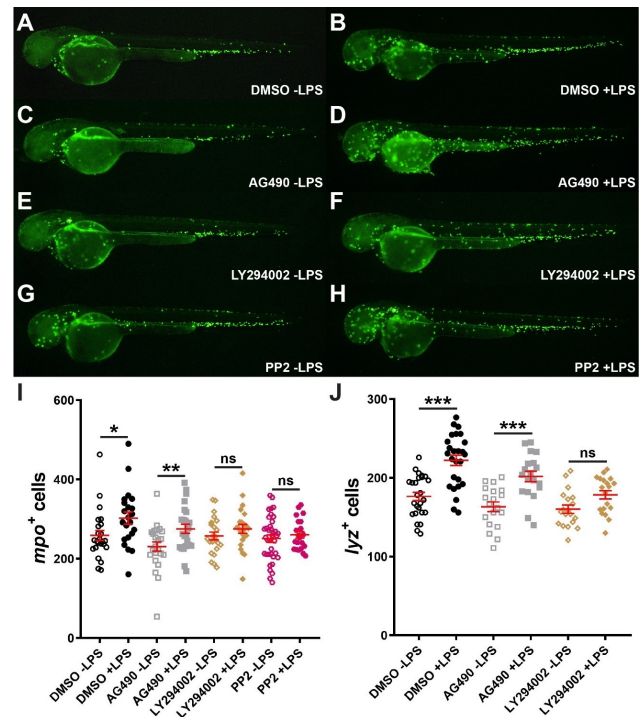
diate the developmental migration of *mpo*<sup>+</sup> cells. This disparity may be related to the differential spatial and temporal



**Fig. 4. Role of alternative G-CSFR ligands in emergency myelopoiesis.** (A–C) qRT<sup>2</sup>-PCR analysis of wild-type embryos (A) or those injected with scr, *csf3a*, *csf3b* or *csf3a* and *csf3b* (*csf3a/b*) Mo without (-) or with (+) LPS treatment as indicated, for expression of *csf3a* and *csf3b* (A), *mpo* (B) or *lyz* (C) showing mean and S.E.M (n = 3). (D–I) Fluorescent microscopy images of representative Tg (*lyz::DsRed*) embryos injected with either scr Mo (D,E), *csf3a* Mo (F,G) or *csf3a/b* Mo (H,I), either without (-) (D,F,H) or with (+) (E,G,I) LPS treatment. (J) Quantitation of *lyz*<sup>+</sup> cells in Tg (*lyz::DsRed*) embryos injected with the indicated morpholinos either without (-) with (+) LPS treatment showing individual embryos as well as mean and S.E.M.. For panels A–C and J statistical significance is indicated (\*:  $p < 0.05$ ; \*\*:  $p < 0.001$ ; \*\*\*:  $p < 0.0001$ ; ns, not significant). For panels B and C, black indicates relative to scr Mo -LPS and red indicates relative to scr Mo +LPS.

expression of *csf3a* and *csf3b* that has been reported [11]. Both the JAK and PI3K signaling pathways were required to mediate both of these developmental roles.

Emergency myeloid cell production is a pivotal aspect of the immune response [22]. This can be stimulated in zebrafish embryos by infection [23] or injection of bacterial LPS [8], and has been shown to require Csf3r [8]. Enforced expression of either Csf3a or Csf3b has been shown to stimulate the production of various early myeloid cells, including both the *mpo*<sup>+</sup> and *lyz*<sup>+</sup> populations [11]. Our data using LPS injection to stimulate emergency myelopoiesis would suggest that while both play a role, Csf3a exerts



**Fig. 5. Role of alternative G-CSFR pathways in emergency myelopoiesis.** (A–H) Fluorescent microscopy images of representative Tg (*mpo::GFP*) embryos treated with either DMSO (A,B), AG490 (C,D), LY294002 (E,F) or PP2 (G,H) either without (-) (A,C,E,G) or with (+) (B,D,F,H) LPS treatment. (I,J) Quantitation of *mpo*<sup>+</sup> cells in Tg (*mpo::GFP*) embryos (I) or *lyz*<sup>+</sup> cells in Tg (*lyz::DsRed*) embryos (J) treated with the indicated agents either without (-) or with (+) LPS treatment, showing individual embryos as well as mean and S.E.M. along with statistical significance (\*:  $p < 0.05$ ; \*\*:  $p < 0.001$ ; \*\*\*:  $p < 0.0001$ ; ns, not significant).

a greater influence, being induced to a higher extent by LPS and with its ablation abrogating the effects of LPS marginally more compared to Csf3b. Csf3a has been shown to possess higher colony forming unit (CFU)-promoting abilities than Csf3b potentially reflecting higher biological activity [11], which may also be relevant in this context. PI3K signaling was found to be essential for emergency myelopoiesis. This pathway has previously been implicated in G-CSFR-mediated cell proliferation [15,24]. Interestingly, the Src kinase inhibitor PP2 also abrogated emergency myelopoiesis, consistent with research indicating a role for the Src kinase Lyn in G-CSFR-mediated proliferative responses [16] and suggesting a previously-described Lyn-PI3K pathway [15] may be involved. The absence of a requirement for JAK signaling in emergency myelopoiesis is concordant with data showing that JAK2 is not crucial for G-CSFR-mediated cell growth [25].

Neutrophils play a key role in the response to injury, with G-CSF treatment shown to improve wound healing in mice and humans [4,26]. The role of G-CSFR pathways

was investigated using a tail fin wounding assay. The results demonstrated that the initial recruitment of *mpo*<sup>+</sup> neutrophils was mainly driven by PI3K. This is in agreement with other research demonstrating that PI3K mediates the enhancement of neutrophil motility induced by G-CSF [27], and is necessary for the directed migration of zebrafish neutrophils in response to wounding [19]. Other research has suggested that wounding-mediated neutrophil migration in zebrafish is dependent on Cxcl18 and Cxcr2 [28,29]. How these chemokines cross talk with Csf3r/PI3K signaling remains to be determined. In contrast, the retention of neutrophils required JAK signaling, potentially related to the ability of JAK2 to enhance G-CSFR expression [30]. We showed that Csf3b is the more important upstream ligand for the migration of these *mpo*<sup>+</sup> cells, consistent with previous work showing that Csf3b is strongly induced by wounding and plays a role in wounding-induced migration [21]. The *lyz*<sup>+</sup> leukocyte population behaved similarly with respect to initial recruitment, although Csf3a along with PI3K also contributed to retention, suggesting different signaling requirements in these cells.

## 5. Conclusions

Together the results of this paper provide evidence for both overlapping, redundant and specific roles for Csf3a and Csf3b during development, ‘emergency’ myelopoiesis and wound healing, which is consistent with their differential but overlapping spatial and temporal expression patterns and biochemical properties. The downstream JAK and PI3K signaling pathways showed similar relationships, with both involved developmentally, but with PI3K more important in emergency production and initial recruitment to wounding, while JAK signaling played a greater role in later recruitment. Whether Csf3a and Csf3b differentially use these pathways remains to be determined.

## Abbreviations

CSF, colony-stimulating factor; dpf, days post fertilization; ERK, extracellular signal regulated kinase; G-CSF, granulocyte colony-stimulating factor; hpf, hours post fertilization; JAK, Janus kinase; LPS, lipopolysaccharide; MAPK, mitogen-activated protein kinase; PI3K, phosphatidylinositol 3-kinase; R, receptor; STAT, signal transducer and activator of transcription.

## Author Contributions

CL and ACW designed the research study. ABM, FB, RS, ML and CL performed the research. ABM, CL and ACW analyzed the data. ABM and ACW wrote the manuscript. All authors read and approved the final manuscript.

## Ethics Approval and Consent to Participate

National and institutional guidelines for the care and use of laboratory animals were followed in all studies, which were approved by the Deakin University Animal Ethics Committee (G28-2013 and G23-2016).

## Acknowledgment

The authors wish to thank Bruce Newell and the other technical staff for outstanding zebrafish husbandry.

## Funding

The authors recognize the support of a Deakin Medical School Postgraduate Stipend (ML), a Postgraduate Research Scholarship (RS), an International Research Scholarship (FB) and Alfred Deakin Postdoctoral Research Fellowship (CL) from Deakin University. This work utilized the resources of the Australian Research Council LIEF initiative Fish Works: Collaborative Infrastructure for Zebrafish Research (LE0347607) (ACW).

## Conflict of Interest

The authors declare no conflict of interest.

## References

- [1] Mehta HM, Corey SJ. G-CSF, the guardian of granulopoiesis. *Seminars in Immunology*. 2021; 54: 101515.
- [2] Touw IP, van de Geijn GM. Granulocyte colony-stimulating factor and its receptor in normal myeloid cell development, leukemia and related blood cell disorders. *Frontiers in Bioscience*. 2007; 12: 800–815.
- [3] Liongue C, Wright C, Russell AP, Ward AC. Granulocyte colony-stimulating factor receptor: Stimulating granulopoiesis and much more. *The International Journal of Biochemistry and Cell Biology*. 2009; 41: 2372–2375.
- [4] Eroglu E, Agalar F, Altuntas I, Eroglu F. Effects of granulocyte colony stimulating factor on wound healing in a mouse model of burn trauma. *The Tohoku Journal of Experimental Medicine*. 2004; 204: 11–16.
- [5] Dale DC. How i diagnose and treat neutropenia. *Current Opinion in Hematology*. 2016; 23: 1–4.
- [6] Berman J, Payne E, Hall C. The zebrafish as a tool to study hematopoiesis, human blood diseases, and immune function. *Advances in Hematology*. 2012; 2012: 1–2.
- [7] Rasighaemi P, Basheer F, Liongue C, Ward AC. Zebrafish as a model for leukemia and other hematopoietic disorders. *Journal of Hematology and Oncology*. 2015; 8: 29.
- [8] Liongue C, Hall C, O’Connell B, Crozier P, Ward AC. Zebrafish granulocyte colony-stimulating factor receptor signalling promotes myelopoiesis and myeloid cell migration. *Blood*. 2009; 113: 2535–2546.
- [9] Pazhakh V, Clark S, Keightley MC, Lieschke GJ. A GCSFR/CSF3R zebrafish mutant models the persistent basal neutrophil deficiency of severe congenital neutropenia. *Scientific Reports*. 2017; 7: 44455.
- [10] Basheer F, Rasighaemi P, Liongue C, Ward AC. Zebrafish granulocyte colony-stimulating factor receptor maintains neutrophil number and function throughout the life span. *Infection and Immunity*. 2019; 87: e00793-18.
- [11] Stachura DL, Svoboda O, Campbell CA, Espín-Palazón R, Lau RP, Zon LI, *et al*. The zebrafish granulocyte colony-stimulating

- factors (Gcsfs): 2 paralogous cytokines and their roles in hematopoietic development and maintenance. *Blood*. 2013; 122: 3918–3928.
- [12] Renshaw SA, Loynes CA, Trushell DMI, Elworthy S, Ingham PW, Whyte MKB. A transgenic zebrafish model of neutrophilic inflammation. *Blood*. 2006; 108: 3976–3978.
  - [13] Hall C, Flores MV, Storm T, Crosier K, Crosier P. The zebrafish lysozyme C promoter drives myeloid-specific expression in transgenic fish. *BMC Developmental Biology*. 2007; 7: 42.
  - [14] Livak KJ, Schmittgen TD. Analysis of relative gene expression data using real-time quantitative PCR and the 2- $\Delta\Delta$ CT method. *Methods*. 2001; 25: 402–408.
  - [15] Zhu Q, Xia L, Mills GB, Lowell CA, Touw IP, Corey SJ. G-CSF induced reactive oxygen species involves Lyn-PI3-kinase-Akt and contributes to myeloid cell growth. *Blood*. 2006; 107: 1847–1856.
  - [16] Corey SJ, Dombrosky-Ferlan PM, Zuo S, Krohn E, Donnenberg AD, Zorich P, *et al.* Requirement of Src kinase Lyn for induction of DNA synthesis by granulocyte colony-stimulating factor. *The Journal of Biological Chemistry*. 1998; 273: 3230–3235.
  - [17] Pase L, Layton JE, Wittmann C, Ellett F, Nowell CJ, Reyes-Aldasoro CC, *et al.* Neutrophil-delivered myeloperoxidase dampens the hydrogen peroxide burst after tissue wounding in zebrafish. *Current Biology*. 2012; 22: 1818–1824.
  - [18] Chen W, Zhao J, Mu D, Wang Z, Liu Q, Zhang Y, *et al.* Pyroptosis Mediates Neutrophil Extracellular Trap Formation during Bacterial Infection in Zebrafish. *The Journal of Immunology*. 2021; 206: 1913–1922.
  - [19] Walters KB, Green JM, Surfus JC, Yoo SK, Huttenlocher A. Live imaging of neutrophil motility in a zebrafish model of WHIM syndrome. *Blood*. 2010; 116: 2803–2811.
  - [20] Doll L, Aghaallaei N, Dick AM, Welte K, Skokowa J, Bajoghli B. A zebrafish model for HAX1-associated congenital neutropenia. *Haematologica*. 2021; 106: 1311–1320.
  - [21] Galdames JA, Zuñiga-Traslaviña C, Reyes AE, Feijóo CG. Gcsf-Chr19 promotes neutrophil migration to damaged tissue through blood vessels in zebrafish. *Journal of Immunology*. 2014; 193: 372–378.
  - [22] Malengier-Devlies B, Metzemaekers M, Wouters C, Proost P, Matthys P. Neutrophil homeostasis and emergency granulopoiesis: the example of systemic juvenile idiopathic arthritis. *Frontiers in Immunology*. 2021; 12: 766620.
  - [23] Hall CJ, Flores MV, Oehlers SH, Sanderson LE, Lam EY, Crosier KE, *et al.* Infection-responsive expansion of the hematopoietic stem and progenitor cell compartment in zebrafish is dependent upon inducible nitric oxide. *Cell Stem Cell*. 2012; 10: 198–209.
  - [24] Kanayasu-Toyoda T, Yamaguchi T, Oshizawa T, Uchida E, Hayakawa T. The role of c-Myc on granulocyte colony-stimulating factor-dependent neutrophilic proliferation and differentiation of HL-60 cells. *Biochemical Pharmacology*. 2003; 66: 133–140.
  - [25] Parganas E, Wang D, Stravopodis D, Topham DJ, Marine JC, Teglund S, *et al.* Jak2 is essential for signaling through a variety of cytokine receptors. *Cell*. 1998; 93: 385–395.
  - [26] Nishio N, Okawa Y, Sakurai H, Isobe K. Neutrophil depletion delays wound repair in aged mice. *Age*. 2008; 30: 11–19.
  - [27] Nakamae-Akahori M, Kato T, Masuda S, Sakamoto E, Kutsuna H, Hato F, *et al.* Enhanced neutrophil motility by granulocyte colony-stimulating factor: the role of extracellular signal-regulated kinase and phosphatidylinositol 3-kinase. *Immunology*. 2006; 119: 393–403.
  - [28] Deng Q, Sarris M, Bennin DA, Green JM, Herbomel P, Huttenlocher A. Localized bacterial infection induces systemic activation of neutrophils through Cxcr2 signaling in zebrafish. *Journal of Leukocyte Biology*. 2013; 93: 761–769.
  - [29] de Oliveira S, Reyes-Aldasoro CC, Candel S, Renshaw SA, Mulero V, Calado A. Cxcl8 (IL-8) mediates neutrophil recruitment and behavior in the zebrafish inflammatory response. *Journal of Immunology*. 2013; 190: 4349–4359.
  - [30] Meenhuis A, Irandoust M, Wölfler A, Roovers O, Valkhof M, Touw I. Janus kinases promote cell-surface expression and provoke autonomous signalling from routing-defective G-CSF receptors. *Biochemical Journal*. 2009; 417: 737–746.