

## Biom mineralization of bone: a fresh view of the roles of non-collagenous proteins

Jeffrey Paul Gorski<sup>1</sup>

<sup>1</sup>*Center of Excellence in the Study of Musculoskeletal and Dental Tissues and Dept. of Oral Biology, Sch. Of Dentistry, Univ. of Missouri-Kansas City, Kansas City, MO 64108*

### TABLE OF CONTENTS

1. Abstract
2. Introduction
3. Proposed mechanisms of mineral nucleation in bone
  - 3.1. Biom mineralization Foci
  - 3.2. Calcospherulites
  - 3.3. Matrix vesicles
4. The role of individual non-collagenous proteins
  - 4.1. Bone Sialoprotein
  - 4.2. Noggin
  - 4.3. Chordin
  - 4.4. Osteopontin
  - 4.5. Osteopontin, bone sialoprotein, and DMP1 form individual complexes with MMPs
  - 4.6. Bone acidic glycoprotein-75
  - 4.7. Dentin matrix protein1
  - 4.8. Osteocalcin
  - 4.9. Fetuin (alpha2HS-glycoprotein)
  - 4.10. Periostin
  - 4.11. Tissue nonspecific alkaline phosphatase
  - 4.12. Phospho 1 phosphatase
  - 4.13. Ectonucleotide pyrophosphatase/phosphodiesterase
  - 4.14. Biological effects of hydroxyapatite on bone matrix proteins
  - 4.15. Sclerostin
  - 4.16. Tenascin C
  - 4.17. Phosphate-regulating neutral endopeptidase (PHEX)
  - 4.18. Matrix extracellular phosphoglycoprotein (MEPE, OF45)
  - 4.19. Functional importance of proteolysis in activation of transglutaminase and PCOLCE
  - 4.20. Neutral proteases in bone
5. Summary and Perspective
6. Acknowledgements
7. References

### 1. ABSTRACT

The impact of genetics has dramatically affected our understanding of the functions of non-collagenous proteins. Specifically, mutations and knockouts have defined their cellular spectrum of actions. However, the biochemical mechanisms mediated by non-collagenous proteins in biom mineralization remain elusive. It is likely that this understanding will require more focused functional testing at the protein, cell, and tissue level. Although initially viewed as rather redundant and static acidic calcium binding proteins, it is now clear that non-collagenous proteins in mineralizing tissues represent diverse entities capable of forming multiple protein-protein

interactions which act in positive and negative ways to regulate the process of bone mineralization. Several new examples from the author's laboratory are provided which illustrate this theme including an apparent activating effect of hydroxyapatite crystals on metalloproteinases. This review emphasizes the view that secreted non-collagenous proteins in mineralizing bone actively participate in the mineralization process and ultimately control where and how much mineral crystal is deposited, as well as determining the quality and biomechanical properties of the mineralized matrix produced.

### 2. INTRODUCTION

Mineralization of bone represents an extracellular process in which osteoblastic and osteocytic cells remain viable embedded within a matrix of their making. While mature bone matrix is predominantly composed of type I collagen, the ubiquitous expression of collagen indicates that additional factors are needed to initiate and control the formation of hydroxyapatite crystals which are deposited predominantly between the collagen fibrils. In general, investigation of the process of bone formation and mineralization has been difficult because of the restricted location of the forming sites, the temporal movement of the mineralization front as mineralization proceeds, and the mineralized nature of the bone tissue. This has necessitated a reliance upon cell culture models to generate concepts and paradigms which are then tested in explant or whole animal models. This review represents an overview of both *in vitro* and *in vivo* model systems and attempts to integrate data from both sources to reach functional concepts regarding the roles of each of the major non-collagenous proteins in biomineralization of bone.

### 3. PROPOSED MECHANISMS OF MINERAL NUCLEATION IN BONE

New bone formation in the vertebrate embryo is produced by two distinct condensation processes: intramembranous, which forms and persists in the calvaria and jaws, and endochondral, which forms the long bones. In intramembranous bone formation, woven or primary bone is rapidly formed without a cartilaginous precursor, whereas endochondral bone uses a previously formed vascularized cartilage template (1). Primary bone is formed *in situ* where a rapid deposition of bone is required—embryogenesis, fracture healing, and adaptive bone gain after mechanical loading (~3000 microstrain) (2). In adult skeletons, the two distinct types of bone formation may have common but also unique molecular and cellular control mechanisms. Primary bone is defined as bone that forms where no bone existed previously. In contrast, lamellar or mature bone can be viewed as “replacement bone” formed when bone (either woven or lamellar bone) is resorbed by osteoclasts and then replaced by new lamellar bone. “Modeling” and “remodeling” are applied to the formation of primary bone and lamellar bone, respectively. In both primary and lamellar bone, initial hydroxyapatite crystal nucleation is mediated by organic molecules. There are two essential events in mineralization: the first is nucleation of mineral to produce crystals with a C-axis length of between 15 and 20 nm (3) and the second is mineral crystal propagation, also known as the crystal growth phase (4). Several cell-derived structures have been proposed to be responsible for the initiation and control of the mineral nucleation event. These include: matrix vesicles (5-8), biomineralization foci (9-11), ‘crystal ghosts’ (12), calcospherulites (13), phosphoproteins-collagen fibrils (14, 15) and fetuin (16, 17). The contribution of each of these to the initial nucleation event continues to be debated but it is likely

that their relative contributions will vary in different tissues or developmental stages.

#### 3.1. Biomineralization Foci

We have shown that 10-25 micron in diameter BMF are the sites of initial mineral nucleation in three osteoblast cell lines, in developing periosteum, and in new primary bone produced by marrow ablation model (9, 10). Interestingly, pre-BMF can be visualized prior to addition of extra phosphate to the cultures and, following addition, nucleation of hydroxyapatite crystals occurs exclusively within BMF starting as soon as 12 h later. Proteomic analyses on laser capture micro dissected mineralized BMF indicate they are enriched in acidic phosphoproteins BSP and BAG-75, along with a range of different sized vesicles (50 nm to 2  $\mu$ m) including matrix vesicles (11). Banded collagen fibrils do not appear to be present within these pre-BMF. Vesicles within BMF are the sites of initial mineral nucleation (9-11, 18, 19). Although BSP is associated with the first needle-like crystals produced in developing bone or culture models, it has not been reported to be a component of matrix vesicles. In this way, BSP appears to define a biochemically distinct population of particles which are larger than matrix vesicles and which can also become mineralized (10, 18). Importantly, based on a shared enrichment in BSP and their structure and tissue distribution, Bonucci recently concluded that crystal ghosts are a mineralized tissue equivalent of BMF in osteoblastic cultures (20).

Recently we showed that mineral nucleation within UMR106-01 and fetal mouse calvarial osteoblastic cells could be blocked by 100  $\mu$ M AEBSF, a covalent serine protease inhibitor, without impacting cell viability (11). In contrast, fifteen general and specific inhibitors against acidic, metallo-, and sulfhydryl proteases were without effect. Partial fragmentation of BMF biomarkers BSP and BAG-75 was also inhibited by AEBSF, along with that for procollagen C-terminal propeptidase enhancer1 (PCOLCE1) and 1,25-vit. D3-MARRS protein (Membrane Associated, Rapid Response Steroid binding receptor). The 50 kDa fragment of BAG-75 was detected using antibodies against the N-terminal peptide (VARYQNTEEEE) (21); in separate studies we have shown that these antibodies detect a 50 kDa band in serum which is induced 3-fold in rats stimulated to undergo new bone formation (unpublished result, Gorski). Subsequent work has sought to establish the mechanism for AEBSF action.

A detailed literature search identified a candidate protease sensitive to AEBSF inhibition, proprotein convertase SKI-1 (S1P) (22). Analysis of BSP, 1,25-D3-MARRS (Membrane Associated, Rapid Response Steroid binding receptor), and procollagen C-proteinase enhancer protein 1 (PCOLCE1), three proteins whose cleavage is blocked by AEBSF (14), reveals each contains several SKI-1 candidate cleavage sequences which appear capable of generating the observed fragments (unpublished result, Huffman, Seidah and Gorski). We have also recently shown that a catalytically active 105 kDa form of SKI-1

(23, 24) is highly expressed within laser capture microscope purified BMF (25).

### 3.2. Calcospherulites

Midura *et al.* (29, 30) recently isolated calcospherulites (from the mineralization front of tibial periosteum) and used them to induce the mineralization of type I collagen *in vitro*. Calcospherulites were identified as 0.5  $\mu$ m diameter particles which had taken up calcein within the 24 h following *in vivo* injection. The particles exhibited a Ca/P ratio of 1.3 which rose to 1.6 after treatment with ice cold ethanol and were enriched in bone matrix phosphoproteins BSP and BAG-75. When incubated in collagen hydrogels, calcospherulites seeded a mineralization reaction on type I fibrils. When compared with BMF from osteoblastic cells, we conclude that calcospherulites represent mineralized vesicles comparable to those which are the sites of initial mineral deposition within BMF. We believe their membrane bilayer acts as a barrier to proteolysis and permits their isolation based upon their mineral and calcein content, whereas we presume other BMF components are degraded by the dispase used (28,29). In this way, calcospherulites likely represent a protease resistant, mineral containing fraction of BMF (9-11, 18).

### 3.3. Matrix vesicles

First identified and characterized by Bonucci (31) and by Anderson (32), matrix vesicles have a long and controversial history in bone. However, recent work with BMF and calcospherulites indicates that matrix vesicles, and other vesicles, are present in bone and in mineralizing osteoblastic cultures (9-11, 18, 28, 29). However, while recent work shows that mineral crystals in developing bone are deposited within vesicles (8, 33), it does not show that matrix vesicles are the exclusive sites of mineral deposition in bone. Rather, careful analysis suggests that different sizes and distinct compositional populations of vesicles exist in mineralizing bone, including matrix vesicles, and participate in the initial mineral deposition.

Xiao Z *et al.* (34) recently characterized the proteome of extracellular matrix vesicles isolated from mineralizing MC3T3-E1 osteoblasts using proteolysis. This confirmed a number of well known matrix vesicle components, including annexin V, alkaline phosphatase, aminopeptidase A, and Emilin-1. In addition, over 125 other proteins were identified in common between the two matrix vesicle preparation methods compared. The results indicate that the protein composition of matrix vesicles is the result of a molecular sorting process which yields a different more specialized composition than expressed on the plasma membranes of differentiated osteoblastic cells (34).

## 4. THE ROLE OF INDIVIDUAL NON-COLLAGENOUS PROTEINS

As the most prevalent protein in the body, type I collagen is distributed widely among mineralized and non-mineralized tissues. On this basis, it is apparent that type I collagen alone cannot be solely responsible for the unique

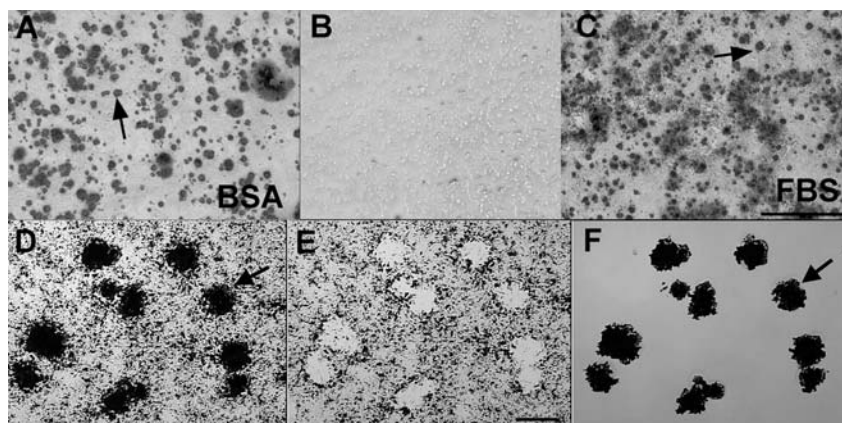
capacity of bone to mineralize. With the abovementioned initiation systems in mind, we now turn to a consideration of the functional roles of individual non-collagenous proteins. The reader is referred to previous reviews for a more comprehensive treatment of the older literature (3, 35-37).

### 4.1. Bone Sialoprotein (BSP)

Originally cloned by Fisher and colleagues (38), BSP is thought to be related to the sialoprotein isolated by Herring in 1964 (39). Based on the work of Goldberg and colleagues (40-44), BSP is generally believed to function in bone as a crystal nucleator, although a number of studies demonstrate it is able to signal through its RGD integrin binding site and a second, cryptic cell adhesion site (45, 46). Importantly, Aubin and colleagues have produced a BSP null mouse and characterized its bone phenotype (47-51) with and without skeletal challenge. BSP null mice breed normally but their weight and size is lower than wild type mice. Hypomineralized bone is evident in embryonic and young adult bone, but not in mice over 1 year old (51). At 4 months of age, cortical bone from BSP (-/-) mice is thinner than wild type, but with greater trabecular volume with a very low bone formation rate. BSP null bone also displays fewer osteoclasts. In addition, BSP deficient mice exhibited a delay in healing response at 2 and 3 weeks after formation of cortical defects. In contrast, OPN null mice responded no differently than controls when analyzed by MicroCT or histology. Interestingly, BSP null mice lose bone normally in unloading studies, while OPN null mice do not lose bone (48). In summary, the absence of BSP results in impaired new bone formation and osteoclast activity (47-51). However, the lack of a more dramatic phenotype has been suggested to be due to a functional redundancy with other acidic phosphoproteins in bone.

Gordon *et al.* (52, 53) have shown that the RGD motif is required to for BSP to induce osteoblastic differentiation. When BSP was over-expressed in primary calvarial osteoblastic cells using a adenoviral vector, Runx2 and Osx expression, alkaline phosphatase, and mineralization were all increased via a pathway involving focal adhesion kinase and MAP kinase associated ERK  $\frac{1}{2}$  proteins. These findings seem at odds however with the phenotype of transgenic mice over-expressing BSP using the CMV promoter. The mice display mild dwarfism, lower BMD, and lower trabecular bone volume, while expressing higher levels of bone resorption markers indicating increased osteoclastic bone resorption. An explanation for these unexpected *in vivo* results is not yet evident.

BSP also has effects on bone resorption of osteoclasts. Curtain *et al.* (54) showed that dephosphorylated bone BSP preferentially inhibited the differentiation of osteoclasts in a live bone organ culture model via an intracellular tyrosine phosphorylation signaling pathway. Native bone BSP had little effect on osteoclast formation and bone resorption, whereas dephosphorylated BSP eliminated PTH-induced bone resorption. These effects were only partially blocked by integrin receptor antagonist GRGDS. Mechanistically, the



**Figure 1.** Biomineralization foci can be isolated from total cell layers by laser capture microscopy. A and B, UMR-106-01 osteoblastic cells were cultured in serum-depleted conditions (BSA), or C, the presence of serum (FBS). Cultures were stained with Alizarin red S to detect hydroxyapatite crystals. B, both conditions failed to mineralize in the absence of BGP. Arrows point to mineralized BMF (A and C). Scale bar: 500  $\mu$ m. D–F, laser capture microscopy of Alizarin red S stained BMF from UMR-106-01 culture. Arrows refer to the same BMF structures in all panels. D, microscopic view of field to be laser-captured. E, appearance of the residual cell layer left behind after laser dissection of mineralized BMF. F, purified BMF temporarily affixed to the “cap” used for laser capture. Scale bar: 25  $\mu$ m. (Reproduced with permission of the J. of Biological Chemistry).

effects of dBSP appeared to be mediated by down regulation of osteoblastic RANKL production in this bone organ culture system. Physiologically, Curtin *et al.* (54) believe that dBSP released/produced by active osteoclastic resorption of bone matrix could feedback to cells in the local environment to block or limit the resorption phase. It should be noted that Mintz *et al.* (45) first identified a non-RGD, cryptic cell adhesion site on BSP which was exposed upon cleavage. In addition, Sato *et al.* (55) also showed that BAG-75 inhibited osteoclast differentiation as well as resorption by preformed osteoclasts.

Recent work with recombinant BSP demonstrates that phosphorylation of serine-136 is critical for BSP-mediated nucleation of hydroxyapatite crystals in a steady state assay (44). BSP binding to native type I collagen increased calcium binding by 10-fold compared with free BSP. Serine-136 is a site adjacent to one of two Glu-rich regions previously implicated in hydroxyapatite nucleation, e.g., residues 42-100 and 133-205 (56). Boskey and colleagues have also used diffusion studies within a semi-solid collagenous gel to establish the ability of BSP to nucleate hydroxyapatite crystals (57).

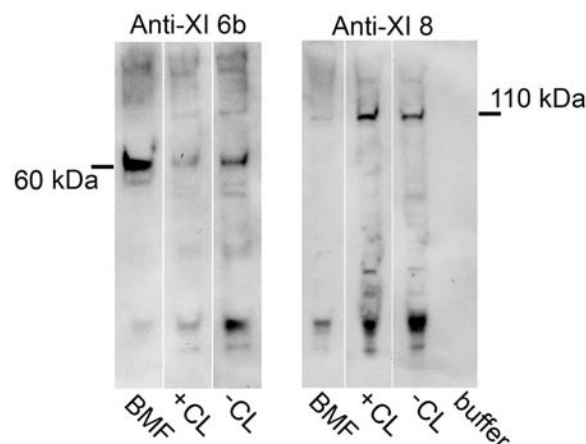
While these data indicate that BSP is the most potent protein nucleator of hydroxyapatite, a role for BSP in the mineralization of collagen is limited by a lack of a mechanism to bind BSP specifically to the hole or gap regions of fibrillar collagen as first proposed by Glimcher (16) and by Veis and Schleuter (15). Since initial mineral crystals were found to be associated with the hole regions in the turkey tendon model of mineralization and since type I collagen is a ubiquitous component of mineralizing as well as non-mineralizing extracellular matrices, these authors argued that the associated phosphoprotein(s), bound to the hole zone of collagen fibrils, acted as a mineralization nucleator. In this way, mineralization of bone extracellular matrix was proposed to be initiated by

the formation of seed crystals in the interfibrillary space which would serve to propagate crystal growth within the broader bone matrix. While an attractive hypothesis, the proposal has yet to be validated largely due the absence of a mechanism to localize phosphoproteins to the hole region. However, recent work from our laboratory has provided an interesting potential mechanism for binding of BSP near the hole region of type I collagen fibrils.

As shown in Figure 1, osteoblastic cells in culture initiate mineralization within spherical extracellular complexes we have termed biomineralization foci (BMF). These BMF are compositionally complex and contain matrix vesicles and larger sized vesicles in which the first mineral crystals are formed. We have used laser micro dissection microscopy to isolate and characterize the proteome of BMF. Interestingly, type XI collagen was found to be enriched within micro dissected BMF, specifically, a 60 kDa fragment containing the 6b alternative splice variant sequence (Figure 2). In contrast, another splice variant, 8, while expressed by UMR106-01 osteoblastic cells as a full length 105 kDa  $\alpha$ 1 chain, is not enriched within BMF (Figure 2). Both the 6b and 8 sequences are part of the N-terminal domain of the type XI  $\alpha$ 1 chain (58) (Figure 3). The charge character of the NTD can be changed dramatically by alternative splicing since the 6b sequence has an isoelectric point of 11.3 and unusual arginine triplet repeat sequences. In contrast, the alternating 6a sequence is acidic in character. The NTD is a large globular extension. The NTD variable region containing the 6b and 8 sequences survives BMP-1 processing and exists as part of the extracellular, mature type XI collagen trimer (Figure 3) (59).

6b sequence: **KKKS**NYT**KKK**RTL ATNS**KKK**SKM S T  
TPKSEKFAS**KKKK**RNQATAKAKLGVQ

6a sequence: YAPEDIIEYDY EY GETDYKEAESV TE  
MPTFTEETVAQT



**Figure 2.** Type XI collagen 6b splice variant is enriched in biomineralization foci. Fractions from osteoblastic cultures in Figure 1 were extracted and solubilized and subjected to Western blotting. A 60 kDa N-terminal 6b immunoreactive fragment of the COL11A1 chain was enriched in mineralized BMF (see F, Figure 1) compared to that from the total cell layer from mineralized (see D, Figure 1) or un-mineralized cultures (see B, Figure 1). In contrast, immunoreactive splice variant 8 was not enriched in BMF. KEY: BMF, extract of laser micro dissected biomineralization foci; +CL, extract from cell layer from mineralized culture; -CL, extract from cell layer from un-mineralized culture. Antibodies kindly provided by Dr. J. T. Oxford.

Alternatively, as shown by our culture data, the 6b region can be cleaved off as a 60 kDa fragment (Figures 2 and 3). As illustrated in Figure 4, the 60 kDa 6b containing type XI NTD fragment associates specifically with bone sialoprotein. Mineralized osteoblastic cell cultures were extracted with EDTA, which removes predominantly material associated with BMF (11), and then immunoprecipitated with anti-BSP antibodies. Interestingly, BSP and the 60 kDa type XI NTD region were only recovered from cultures which mineralized, not those inhibited with AEBSF (Figure 4). Other studies show that the 60 kDa band reacts with anti-6b type XI collagen antibodies and anti-Npp antibodies establishing it as the complete NTD domain (data not shown) (Figure 3).

Taken together we believe these results provide a new novel mechanism by which to localize mineral nucleator protein BSP to the surface of collagen fibrils. Specifically, type XI collagen has been shown to play a critical role in the initiation of type I and II collagen fibrillogenesis, and, in the regulation of fibril diameter (60). As indicated by the model in Figure 5, the 6b sequence of the variable region of the COL11 A1 chain is believed to be expressed on the surface of type I collagen fibrils (61). We propose that BSP can bind to the cationic 6b sequence either as a 60 kDa fragment within mineralizing BMF (Figures 2 and 4) or as present in the BMP-1 processed COL A1 chain exposed on the surfaces of type I collagen fibrils (Figure 5). In this way, BSP/type XI collagen complexes could act as local nucleators to initiate

mineralization of collagen fibrils. The fact that BSP and the 6b containing 60 kDa type XI collagen fragment are also enriched within BMF suggests that BMF and collagen mineralization may share in part a common mechanism for mineral crystal nucleation.

#### 4.2. Noggin

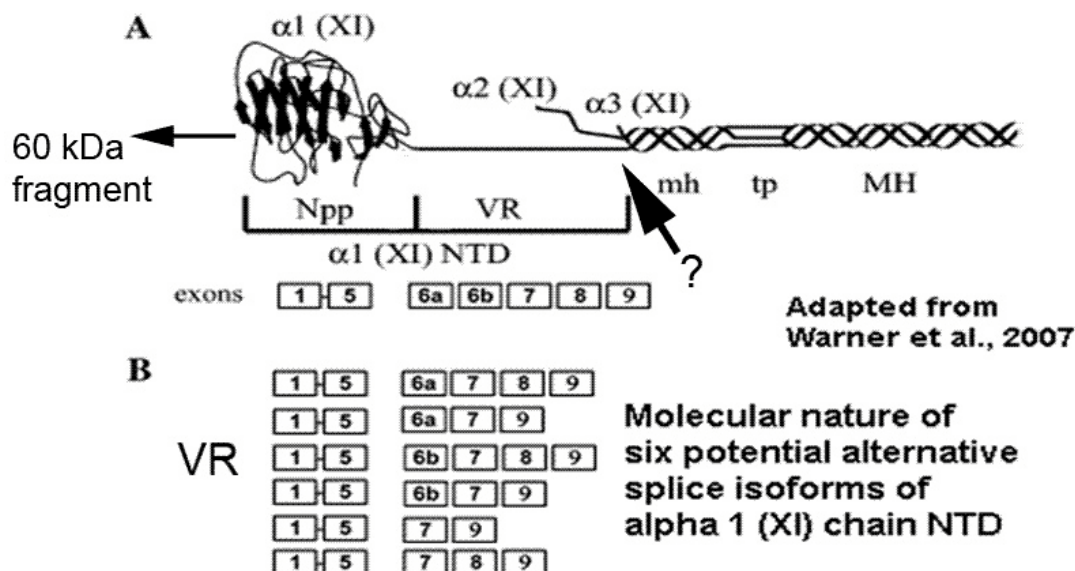
Noggin, along with Chordin, is a bone morphogenetic protein (BMP) antagonist. During mouse embryogenesis, Noggin is expressed at multiple sites, including developing bones. Interestingly, Nog<sup>-/-</sup> mice die at birth from multiple defects that include bony fusion of the appendicular skeleton (62, 63). Groppe *et al.* (64) reported the crystal structure of the antagonist noggin bound to BMP-7, which showed that noggin blocks the molecular interfaces of the binding epitopes for both type I and type II receptors. Importantly, the affinity of site-specific variants of noggin for BMP-7 correlated with changes in bone formation and apoptosis in chick limb development, showing that these complexes are biologically inactive.

#### 4.3. Chordin

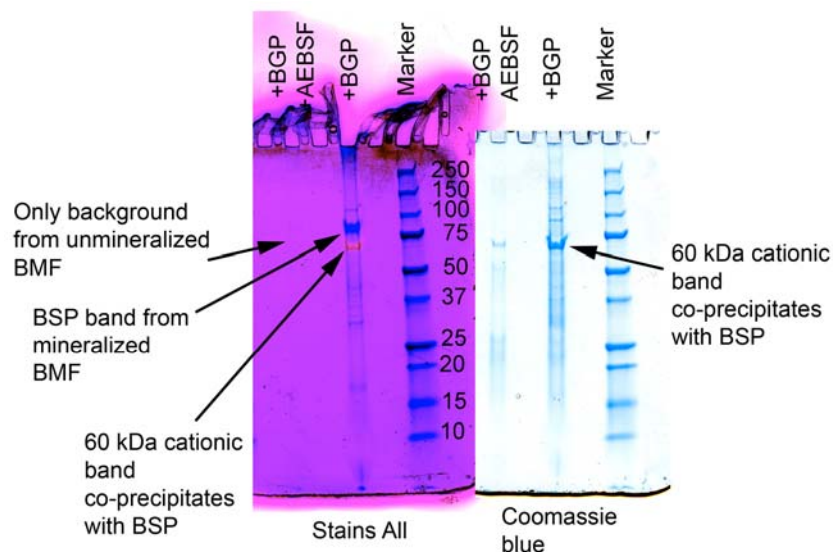
Chordin dorsalizes early vertebrate embryonic tissues by binding to bone morphogenetic proteins and, like noggin, sequestering them in latent complexes. Scott *et al.* (65) showed that over-expression of BMP1 and TLL1 in *Xenopus* embryos counteracted the developmental effects of chordin. Mechanistically, BMP1 and mTLL-1 cleave chordin at sites similar to procollagen C-propeptide cleavage sites. Other BMP-1 family members mTLD and mTLL-2 do not, however, cleave chordin. Interestingly, Wardle *et al.* (66) showed that noggin was not affected by over-expression of BMP-1 (and presumably not cleaved by it). Based on expression and its enzymatic activity, BMP-1 is the major chordin antagonist in early mammalian embryogenesis and in pre- and postnatal skeletogenesis.

#### 4.4. Osteopontin (OPN)

OPN is an RGD-containing, variably phosphorylated member of the SIBLING family of non-collagenous matrix proteins. It is expressed in bone and bone marrow by osteoblastic and osteoclastic precursor cells, multi-nucleated osteoclasts, osteocytes, and osteoblasts (67-69). Franzen *et al.* (70) showed that OPN null mice did not experience age related bone loss. Specifically, measures of osteoclast function were several fold lower, despite an increase in the volume and number of osteoclastic cells in the lower tibial metaphysis which was hypothesized as a compensatory change to overcome the observed inactivity of osteoclasts. These findings indicate that OPN is required for osteoclastic resorption of bone (70). Asou *et al.* (71) also found that osteopontin deficient calvarial bone was inefficiently resorbed when implanted in osteopontin null mice compared with controls. The osteoclast deficiency observed here seemed to be due to reduced angiogenesis in the OPN null mice since it could be reversed by applying OPN protein to the deficient calvarial bone surface prior to its implantation in OPN deficient mice. These results demonstrate that OPN is required both for vascularization and subsequent osteoclastic resorption of bone (71).



**Figure 3.** Model of type XI collagen structure [adapted from Warner *et al.* (58)]. A, Proposed trimeric structure showing large non-helical N-terminal domain for alpha 1 chain. Arrow demarks approximate position of proteolytic cleavage by unknown protease which generates 60 kDa N-terminal fragment found enriched within biomineralization foci (see Figure 2). B, Description of the composition of six different possible splice variant sequences for the N-terminal domain. KEY: VR, variable region; NTD, N-terminal domain; Npp, N-terminal propeptide.



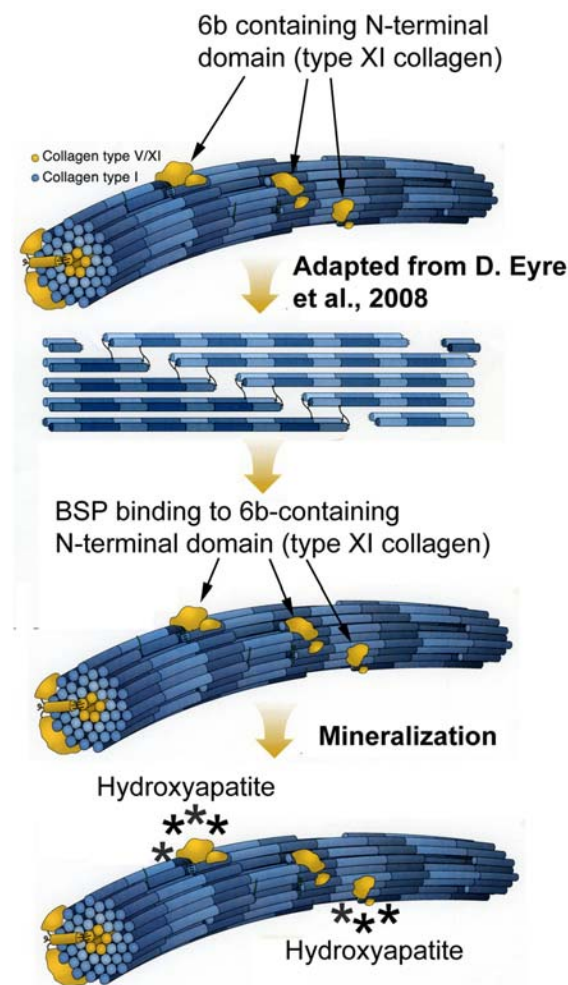
**Figure 4.** Bone sialoprotein is immunoprecipitated together with 60 kDa cationic type XI N-terminal fragment only from mineralized osteoblastic cultures. Extracts of mineralized and un-mineralized osteoblastic cultures were immunoprecipitated with anti-bone sialoprotein antibodies. Immunoprecipitates were subjected to SDS-PAGE and the same gel was stained sequentially with Stains All (left) and then with Coomassie blue dye (right). KEY: +BGP +AEBSF, extract from culture where mineralization was inhibited by 4-(2-aminoethyl)-benzenesulfonyl fluoride hydrochloride; +BGP, extract from mineralized culture; marker, molecular weight standards.

A central role for OPN in the metabolic regulation of bone is also supported by the finding that PTH induced bone resorption does not occur in the absence of OPN (72). OPN deficiency also enhanced the formative response of long bones of null mice to

intermittent PTH injections relative to that of control mice (73).

OPN has long been believed to function as an inhibitor of calcification reactions (74) by binding





**Figure 5.** Model for mineralization of collagen fibrils involving 6b splice variant containing type XI collagen and phosphoprotein BSP. Adapted from image by D. Eyre *et al.* (61), cationic 6b containing N-terminal domains are positioned on the surface of type I fibrils where they can bind mineralization nucleator BSP. We propose this mechanism may fulfill the 1964 phosphoprotein-collagen hypothesis of Glimcher, and, Veis and Schleuter.

specifically to the growing faces of mineral crystals. However, the extent of phosphorylation is a critical modulator of OPN-mineral interactions (74, 75). For example, recombinant OPN and dephosphorylated OPN had no effect on hydroxyapatite crystal formation or growth. In contrast, milk OPN, which contains >30 phosphates/mole, promotes hydroxyapatite formation in static assays (74). In this context, Hunter *et al.* (76) has recently reviewed the topic of non-collagenous protein mediated biomineralization, e.g., the interaction of nucleator proteins with calcium and phosphate ions. They conclude that the widely held concept of epitaxial crystal initiation may not fit current evidence. Their review of existing data and new energy minimization calculations indicates that most known crystal-bone acidic protein interactions are electrostatic in nature and

depend primarily upon the inherent high electronegative charge density of these interactions rather than upon a particular stereochemical conformation. As a result, Hunter *et al.* (76) have put forth a thoughtful alternate hypothesis, e.g., the flexible polyelectrolyte hypothesis of protein-biomineral interaction.

#### 4.5. Osteopontin, bone sialoprotein, and DMP1 form individual complexes with MMPs

Fedarko and colleagues have shown that three SIBLING proteins form specific high affinity complexes with several individual proMMPs (pro-metalloproteinases) and their active forms expressed in skeletal tissues (77). BSP complexes with proMMP-2 and active MMP-2, while osteopontin binds proMMP-3 and active MMP-3, and DMP1 binds proMMP-9 and active MMP-9. For MMP-2, BSP is also able to induce catalytic activity in latent pro-MMP-2 as well as to rescue active enzyme from TIMP2-MMP-2 inhibitory complexes (78, 79). All complexes were disrupted by competition with serum complement factor H suggesting that analogous physiological SIBLING complexes are likely to be limited to sequestered areas near cells. Interestingly, bound MMPs displayed a diminished susceptibility to their respective natural and synthetic inhibitors (77) which may be particularly relevant to the invasive behavior of cancer cells which jointly express high levels of MMPs and these SIBLING proteins (80).

#### 4.6. Bone acidic glycoprotein-75

BAG-75 is defined by its N-terminal sequence (LPVARYQNTTEEEE) and its immunoreactivity with an anti-protein antibody, an anti-peptide antibody against its N-terminal sequence, and a monoclonal antibody (21, 81, 82). A highly acidic, phosphoprotein isolated from and enriched in primary or intramembranous bone (3), BAG-75 binds more calcium ions (133 atoms/mole) than either BSP or OPN on a molar basis. Functionally, when added to differentiated osteoclasts or to differentiating osteoclast culture models, BAG-75 inhibits bone resorption (55). In contrast to BSP or OPN, BAG-75 displays a propensity to self-associate into macromolecular complexes which have the capacity to also trap or sequester large numbers of phosphate ions (83). Operationally, BAG-75 has served as a useful immunoreactive biomarker for areas in osteoblastic cultures and in healing bone which will subsequently become mineralized (11, 19).

#### 4.7 Dentin matrix protein 1

Originally thought to be expressed only in cementoblasts, ameloblasts, osteoblasts, and odontoblasts (84), DMP1 is now known to be also enriched in osteocytes (85). DMP1 is cleaved by BMP-1 into a 55 kDa C-terminal fragment and 35 kDa N-terminal fragment (86, 87). Using furin-deficient cells, von Marschall and Fisher (86) compared three different isoforms of BMP1 and each displayed different activities. In contrast to collagen cleavage by BMP-1, DMP1 cleavage showed no enhancement by procollagenase enhancer protein. DMP1 mediates cell adhesion via its RGD site with  $\alpha_5\beta_3$  receptors on cells. RGD binding was the same for full length and C-terminal fragment, however, a proteoglycan

form of DMP1 was much less active in cell adhesion assays. (88).

Tartaiz *et al.* (89) showed that non-phosphorylated recombinant DMP1 acted as a hydroxyapatite nucleator in a gelatin gel static diffusion system while DMP1 phosphorylated *in vitro* has no effect on crystal growth or formation. Phosphorylated DMP1 synthesized by marrow stromal cells (30 phosphates/mole) however acted as an inhibitor of hydroxyapatite crystal growth and formation. These results seem to indicate that the position of phosphorylation is important for DMP1 to function as a mineralization inhibitor. *In vivo*, DMP1 exists predominantly in tissues as two highly phosphorylated fragments of 57 kDa and 35 kDa. The 57 kDa fragment also acted as a hydroxyapatite nucleator. Gajjeraman *et al.* (90) has also shown that the N-terminal fragment of DMP1 acted as a mineralization inhibitor. However, in contrast to Tartaiz *et al.* (89), they also found that both full-length recombinant DMP1 and post-translationally modified native DMP1 were able to nucleate hydroxyapatite in the presence of type I collagen. This disparity may be due in part to the purity of the DMP1 fragment tested since it is now appreciated that two fragments are derived from the N-terminus, a chondroitin sulfate linked fragment and a 37 kDa polypeptide (91). The proteoglycan fragment acts as a mineralization inhibitor while the remaining 57 kDa and 37 kDa fragments both promote hydroxyapatite crystal formation and growth *in vitro*.

Physiologically, the function of DMP1 in mineralized tissues is closely tied to systemic phosphate regulation. DMP1 null mice and patients with DMP1 mutations exhibit autosomal hypophosphatemic rickets (92, 93). Over-expression of either full-length DMP1 or the 57 kDa C-terminal fragment in the DMP1-null strain largely rescued the skeletal phenotype in mice suggesting that the latter fragment is able to recapitulate the function of full-length DMP1 (94). It can be assumed that the reduced mineralization detected in DMP1 null bone (95) may be largely due to the hypophosphatemia which is a characteristic of the skeletal phenotype (96). The hypophosphatemia of DMP1 null mice is associated with elevated levels of FGF23, a well known negative regulator of systemic phosphate concentration, although the exact mechanism remains unclear (96).

### 4.8. Osteocalcin

Thought to be the most bone restricted protein produced by osteoblastic cells, osteocalcin is unusual in that it is post-translationally modified at up to three glutamic acid residues (GLA)/mole by gamma-carboxylation in a vitamin K dependent enzymatic mechanism (97). Due to its acidic character and GLA residues osteocalcin was initially presumed to be an important regulator of bone mineralization. However, the phenotype of osteocalcin knockout mice is mild and displays no major bone abnormalities (98). These results raised serious questions regarding the function of osteocalcin in bone. Recently, Karsenty and colleagues have suggested that osteocalcin functions as a hormone

released from bone into the blood to regulate insulin secretion by the beta-cells of the pancreas and to control insulin sensitivity by adipocytes (99). Part of a new complex metabolic feedback loop controlling bone, pancreas, and fat tissue, the active form of osteocalcin is undercarboxylated. In this way, the content of active, undercarboxylated osteocalcin in blood is believed to be derived via osteoclastic bone resorption of bone matrix. The process of osteoclastic resorption is believed to expose bone matrix derived osteocalcin to low pH conditions (<4.5) which lead to its chemical decarboxylation and release to the blood (99). The full pathway remains to be completely elucidated since the receptor on pancreatic and fat cells which recognizes undercarboxylated osteocalcin has not yet been identified. Also, the mechanism requires validation to show that acid mediated decarboxylation of osteocalcin is compatible with the temporal sequence of osteoclastic resorption *in vivo*. While this pathway has been largely worked out through genetic ablation of various genes in mice, a growing body of supporting evidence indicates that osteocalcin serves as a metabolic hormone in humans as well (100). Thus, this novel osteocalcin paradigm raises the intriguing question whether other bone matrix proteins may also possess hormonal functions regulating other metabolic systems, e.g., systemic calcium and phosphorus ion concentrations, fat storage, etc.

### 4.9. Fetuin (alpha2HS-glycoprotein)

Fetuin is produced by the liver and by osteoblastic cells (101). Highly acidic, fetuin has the capacity to bind large numbers of calcium ions. As such, fetuin is believed to be a major systemic inhibitor of ectopic calcification in the blood plasma and in tissue fluids (102). As a consequence, fetuin null mice develop micro-calcifications in small blood vessels and increased soft tissue calcification deposits. Interestingly, fetuin also forms a colloid or suspension of fine particles with insoluble calcium phosphate crystals which have been termed calciprotein particles or CPPs (102-105). Jahnke-Dechent and McKee (106) have suggested that CPPs participate in a circulating pathway in plasma to solubilize crystalline calcium deposits and transport finely divided crystal particles among sites of calcium loss (the intestine, kidney, bone). In this sense, recent stopped flow experimental data from this group suggests that the ability of fetuin to inhibit calcification is due to its ability to shield and stabilize early stage protein-mineral complexes as small CPP-like particles rather than permit aggregation of nuclei with subsequent mineral crystal precipitation (107). While very intriguing, the physiological significance CPPs in the process of osteoblast mediated bone formation and mineralization remains to be established. Although likely to be involved, the capacity of fetuin to form and stabilize particulate microcrystals of calcium phosphate (hydroxyapatite) has not been formally tested in the "mineralization by inhibitor exclusion" model proposed by Price *et al.* (17) (see above). Furthermore, the "calcification activity" detected in serum from humans to fish and sharks and partially characterized by Price and colleagues (108) also seems likely to be due, at least in part, to the fetuin in serum and its associated finely suspended colloidal particles of calcium phosphate.



### 4.10. Periostin

Kashima *et al.* (109) showed that periostin is a biomarker for intramembranous bone and is preferentially expressed in the bone produced by individuals with fibrous dysplasia, a benign condition, while not expressed in endochondral bone. Periostin is a disulfide linked GLA-containing 90 kDa protein secreted by osteoblasts and osteoblastic cell lines whose expression is down regulated by phosphate ion and is restricted to the periosteum and periodontal ligament (109, 110). Periostin shows some homology to Betaig-h3, a protein that promotes adhesion and spreading of fibroblasts (111). Betaig-h3 also contains GLA residues. Gamma-carboxylated periostin localizes to mineralized bone nodules formed by mesenchymal stem cells. Periostin knockout mice expressing LacZ were grossly normal at birth, however, 14% of the deficient mice died before weaning. Since all of remaining LacZ positive mice were growth retarded, periostin is required for normal postnatal bone growth (112). In this regard, Bonnet *et al.* (113) showed that periostin is required for the anabolic response of bone to mechanical loading and physical activity. In its absence, long bones in periostin null mice do not respond anabolically to axial compression loading, whereas periostin (+/+) mice respond normally by increasing bone formation activity especially in the periosteum. Importantly, the biomechanical response of periostin null mice was rescued by injection of sclerostin-blocking antibody. These results indicate that periostin acts to block the actions of sclerostin on bone formation. When combined with the skeletal retardation observed in periostin null mice (112), these results show that periostin is a regulator of bone mass and microstructure in response to loading.

Maruhashi *et al.* (114) also showed that periostin stimulated the proteolytic activation of lysyl oxidase. Lysyl oxidase mediates the formation of reactive aldehydes on collagen chains which participate in formation of chemical cross-links. However, lysyl oxidase requires proteolytic activation by BMP-1. Interestingly, the amount of active lysyl oxidase was reduced in calvarial osteoblasts from periostin null mice, while over-expression of periostin promoted release of its propeptide and enzymatic activation. Since direct binding studies showed BMP-1 binds to periostin, these results indicate that periostin acts in analogous way to PCOLCE-1, an enhancer protein which increases by up to 20-fold the rate of procollagen processing by BMP-1 (115).

### 4.11. Tissue Nonspecific Alkaline Phosphatase

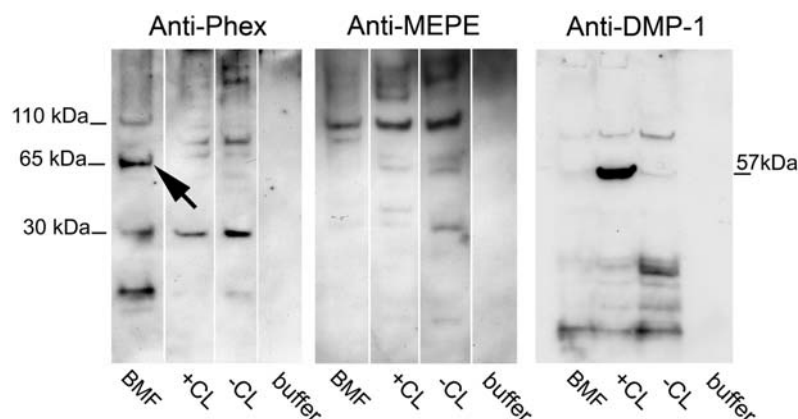
While its expression is not restricted to bone, alkaline phosphatase has long been a prominent component of bone mineralization mechanisms due to its high expression in mineralizing tissues, its enrichment within matrix vesicles, and the ease of its functional analysis. TNAP is associated with the external face of surfaces of osteoblastic and chondrocytic cells via a phosphatidylinositol anchor (116, 117) which can be released by a specific phospholipase D (118). The functional role of alkaline phosphatase in mineralization has become somewhat refocused by very recent studies combining the TNAP knockout with that for Phospho 1.

### 4.12. Phospho 1 phosphatase

Phospho 1 is a phosphatase whose actions are restricted enzymatically to mineralizing cells where it displays a catalytic preference for substrates phosphatidylethanolamine and phosphatidylcholine (119). Phospho 1 is expressed specifically at sites of mineralization of cartilage and bone in osteoblasts and newly formed osteocytes (120). Phospho 1 null mice display growth plate abnormalities, spontaneous fractures, bowed long bones, osteomalacia, and scoliosis in early life. The fact that over-expression of TNAP does not prevent the development of skeletal abnormalities in the Phospho1 null mice, despite correction of plasma PPi levels and of greatly elevated TNAP levels, suggests that Phospho 1 functions through a pathway that is distinct from that of TNAP (8).

As a component of matrix vesicles, it has been suggested that Phospho 1 could produce free phosphate for initiation of matrix mineralization using phosphatidylethanolamine and phosphatidylcholine lipids in matrix vesicles (121). Previous models of mineralization in bone and cartilage have emphasized a role for alkaline phosphatase. However, while deficiency of alkaline phosphatase does diminish the mineral density of bone and growth plate cartilage in young TNAP knockout mice, careful transmission electron microscopic analyses revealed that initiation of mineralization still occurred within vesicles of TNAP deficient bone (32). These findings suggested that hypo-mineralization in TNAP-deficient mice results primarily from an inability of mineral crystals to proliferate beyond the limits of the vesicular membrane. This failure of the second (proliferation) stage of mineralization may be caused by an excess of pyrophosphate inhibitor in the surrounding extracellular fluid. As proposed by Millan and Terkeltaub and colleagues, the concentration of mineralization inhibitor pyrophosphate is regulated by the balance between its breakdown by alkaline phosphatase and its production by PC-1 (ENPP1) (122).

Functionally, Phospho 1 is required to initiate *de novo* mineral crystals within matrix vesicles. For example, treatment of mesenchymal micromass cultures with lansoprazole, a small inhibitor of Phospho 1 resulted in reduced Alizarin red staining. *In situ* hybridization showed that expression of Phospho 1 preceded mineralization (and correlated with TNAP). Importantly, treatment of developing embryos for 5 days with lansoprazole completely inhibited mineralization of all leg and wing long bones as assessed by Alcian blue/Alizarin red staining (123). Yadav *et al.* (8) simultaneously knocked out Phospho 1 and TNAP and showed that the double knockout was completely devoid of skeletal mineralization and exhibited perinatal lethality, despite relatively normal systemic phosphate levels. They concluded that Phospho 1 has a non-redundant functional role during endochondral ossification and proposed an inclusive model of calcification that places Phospho 1 phosphatase action within vesicles in the initiation of mineralization and the functions of TNAP, nucleotide pyrophosphatase phosphodiesterase-1 and collagen in the extravascular progression (propagation) of mineralization. The reader is



**Figure 6.** Immunoblotting shows that a 60 kDa fragment of PHEX is specifically enriched in biomineralization foci whereas MEPE and DMP1 are not. BMF were isolated from Alizarin red stained cell layers using laser micro dissection (see Figure 1), and along with total cell layer fractions, were extracted as described by Huffman *et al.* (11). Six micrograms of total protein were applied to each lane and Western blotted with monospecific antibodies using chemiluminescent detection. Large arrow denotes band specifically enriched in purified BMF. KEY: BMF, extract of laser micro dissected biomineralization foci; +CL, extract from cell layer from mineralized culture; -CL, extract from cell; and, buffer alone, extraction buffer only. Antibodies were kindly provided by Drs. P.S. Rowe and L.D. Bonewald.

referred to the publication by Yadav *et al.* (8) for a more complete description of their “unified model of mineralization”.

#### 4.13. Ectonucleotide Pyrophosphatase/Phosphodiesterase (ENPP1)

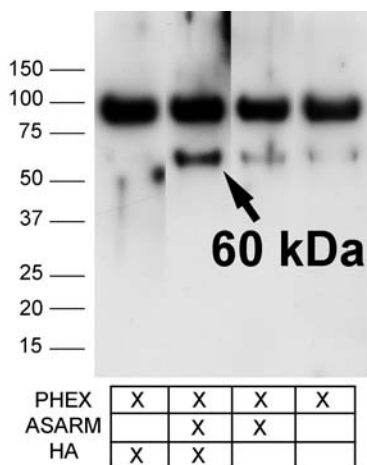
A transmembrane glycoprotein with a short cytoplasmic tail, single transmembrane segment, and an extracellular C-terminal domain, ENPP1 helps to regulate bone and cartilage mineralization by producing inorganic pyrophosphate. The enzyme exhibits both 5'-nucleotide phosphodiesterase I and nucleotide pyrophosphohydrolase activities (124). Based on the results of a double knockout of alkaline phosphatase and ENPP1, the Millan and Terkeltaub labs suggested that these two enzymes each served to balance the activity of the other. Specifically, the double knockout corrects bone mineralization abnormalities which occur in single deletions of each individual enzyme (122). As noted above, recent work with Phospho 1 has clarified the potential roles of ENPP1 both as a 1) producer of pyrophosphate mineralization inhibitor and 2), under conditions of limiting alkaline phosphatase activity, as a producer of extracellular inorganic phosphate via its phosphodiesterase activity to feed the growth and propagation of mineral crystals (8).

#### 4.14. Biological Effects of Hydroxyapatite on Bone Matrix Proteins

Hydroxyapatite is the major crystalline form of calcium phosphate in bone and cartilage tissues. However, hydroxyapatite is thought to be biologically inert. Several studies raise the prospect that hydroxyapatite crystals can modify cellular MMP production and function in bone. First, exposure of fibroblasts or breast cancer cells to hydroxyapatite, calcium pyrophosphate, or basic calcium phosphate crystals induces mitogenesis as well as increases the transcription and expression of MMP-1 and MMP-3

(125-127). In all cases, endocytosis is required for crystals to induce synthesis of MMPs. The effect of calcium phosphate crystals could be abrogated by phosphocitrate, although the mechanism is unclear. Second, we have shown that hydroxyapatite crystals are able to alter dramatically the functional activity of MMP-1 and MMP-3 (83). Specifically, these MMPs, when bound, changed their substrate specificity such that each catalyzed their own autolytic degradation in an intermolecular, calcium-dependent process. Interestingly, other proteases including MMP-2, trypsin, chymotrypsin, papain, and zinc-dependent thermolysin were all unaffected by exposure to hydroxyapatite crystals (83).

Recent work with PHEX (phosphate regulating endoprotease homolog, x-linked) further supports an active role for hydroxyapatite crystals in bone function. PHEX is a single pass transmembrane endoprotease which regulates systemic phosphate metabolism since its mutational inactivation causes x-linked hypophosphatemia (128). Specifically, we have found that a 60 kDa, catalytically active fragment of PHEX is enriched within mineralized biomineralization foci purified by laser micro dissection from osteoblastic cultures (Figure 6). BMF are the initial sites of mineral nucleation within at least three different osteoblastic culture models (9-11, 18, 19). Initial proteomic characterization revealed that mineralized BMF were physically enriched in phosphoproteins BSP and BAG-75 (2-4). However, we have continued to investigate over 35 other matrix proteins and calcium or phosphate channels/transporters as candidate constituents of BMF. Thus far, only four proteins have been found to be physically enriched within BMF complexes, e.g., BSP (9-11, 18), BAG-75 (9-11, 18), Phex, and type XI collagen (see Figure 2 above). This point is illustrated in Figure 6, which shows the specificity of this enrichment through comparisons with 110 kDa full length MEPE and a 57 kDa fragment of DMP1, which are notably not enriched in



**Figure 7.** Hydroxyapatite induces autolytic cleavage of PHEX in presence of ASARM peptide. KEY: PHEX, recombinant 98 kDa secPHEX; ASARM, ASARM peptide; and HA, hydroxyapatite crystals. Proteins were kindly provided by Dr. Peter S. Rowe.

mineralized BMF. Because BMF are detectable before mineralization and become the exclusive sites of initial mineral production/deposition in osteoblastic cultures, we hypothesize that these enriched proteins and their fragments work together to mediate this unique function of BMF complexes, e.g., mineral crystal nucleation.

PHEX is an endoprotease which is structurally related to the M13 family of proteases. We have found that PHEX also exhibits a limited homology with MMP-3 (matrix metalloproteinase-3 or stromelysin), another zinc-dependent metalloprotease. A two way BLAST comparison of these sequences

PheX: 538-NAFYASTNQ I R - - FPAG-553 (identities noted with bold symbols)  
MMP-3: 358-NQFWAIRGNEVRAGYPRG-375

reveals a statistically significant homology of 33% with the #538-553 PHEX peptide region depicted; four other peptides were also found to share a 30-40% identity with MMP-3 (not shown). Homologies >25-30% are generally considered "real" and likely reflect at least a partial shared evolutionary history. The homology with the #538-553 peptide may be particularly important because this region is believed to represent part of the PHEX substrate binding domain (10), whereas in MMP-3 it comprises part of the C-terminal hemopexin domain.

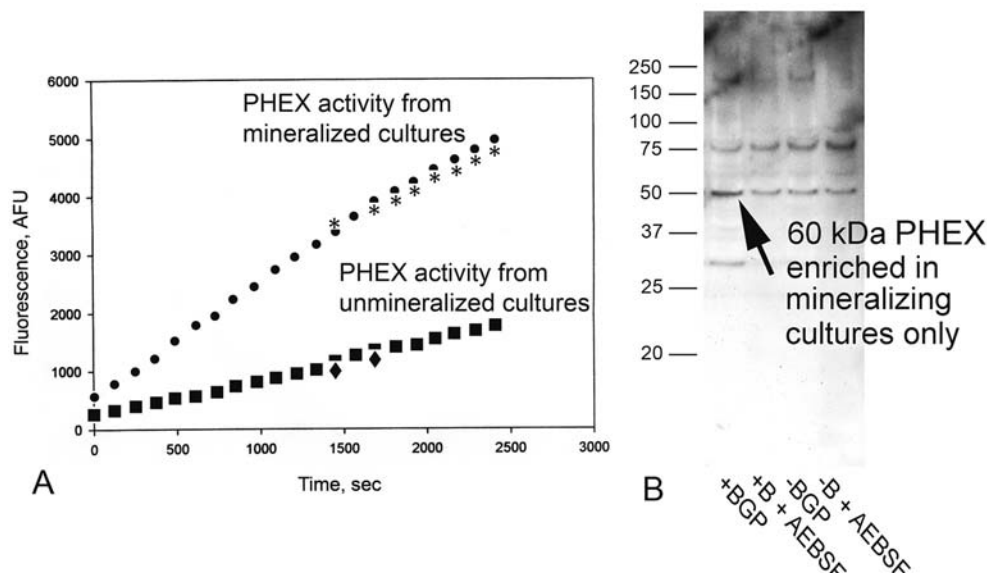
This newly identified structural relationship suggests that PHEX may share functional properties with MMP-3. Because PHEX is localized preferentially to mineralized BMF (Figure 6) and because the substrate binding domain of PHEX exhibits a limited structural homology with MMP-3 (see above), we asked whether the 60 kDa fragment of PHEX observed in BMF was produced by autolytic cleavage induced by exposure to hydroxyapatite crystals. Figure 7 shows that 60 kDa PHEX

is preferentially produced only when recombinant 98 kDa PHEX is incubated with hydroxyapatite crystals in the presence of ASARM peptide. Recombinant 98 kDa PHEX is missing its single transmembrane spanning domain near the N-terminus and a small intracellular domain at the N-terminus of the native protein (129, 130). We conclude that PHEX was induced to cleave itself, as seen for MMP-1 or MMP-3 (83), upon exposure to hydroxyapatite crystals. Since a similar sized 60 kDa fragment was detected by Western blotting of both recombinant PHEX (Figure 7) and of laser micro dissected BMF complexes (Figure 6), we hypothesize that a single hydroxyapatite induced autolytic cleavage site for PHEX is located in the N-terminal half of the sequence yielding a 60 kDa fragment sharing the same C-terminus for both. This is further supported by the fact that Western blots used anti-PHEX antibodies specific for a peptide very near the zinc-binding domain of PHEX (gift of Dr. P. S. Rowe, Univ. of Kansas). Second, we hypothesized that the 60 kDa fragment contained the catalytic region (zinc binding domain and substrate binding site) of PHEX (130), e.g., the 60 kDa fragment was catalytically active.

As shown in Figures 8A and 8B, both PHEX activity and the 60 kDa PHEX fragment content are both 2-3 fold higher in crude osteoblast plasma membrane preparations isolated from mineralized UMR106-01 osteoblastic cultures exposed to hydroxyapatite crystals as compared with that where mineralization was blocked by serine protease inhibitor AEBSF (11) or by omission of exogenous phosphate. Our results strongly suggest that an active 60 kDa PHEX fragment is produced by exposure to hydroxyapatite crystals during the process of mineralization occurring within biomineralization foci. We speculate that the 60 kDa PHEX could exhibit altered enzymatic properties relative to the 98 kDa recombinant isoform and/or the 105 kDa full-length membrane bound isoform. In this way, 60 kDa PHEX could provide a local or systemic feedback signal marking the initiation of mineralization, e.g., to mobilize additional phosphate ions to feed the growth of the new mineral phase.

#### 4.15. Sclerostin

Encoded by its gene *Sost*, Sclerostin is a secreted glycoprotein highly expressed by osteocytes. Inactivating mutations in humans leads to a rare high bone mass condition called sclerosteosis. Transgenic knockout of Sclerostin in mice also leads to increased bone formation and bone strength (131). These findings demonstrate that Sclerostin functions as an anabolic inhibitor, a blocker of bone formation. Its mechanism of action on osteoblasts/osteocytes appears to involve strong protein-protein interactions/complexes with Periostin, Noggin, and cysteine-rich protein 61. Cysteine-rich protein 61 (Cyr 61) regulates mesenchymal stem cell proliferation and differentiation, osteoblast and osteoclast function, and angiogenesis (132). Bonnet *et al.* (113) used mechanical stimuli to show that periostin is required for the anabolic response to mechanical loading and physical activity. Administration of anti-Sclerostin blocking antibody to periostin (-/-) null mice rescued the anabolic bone formation response to biomechanical stimuli which had



**Figure 8.** PHEX endoprotease activity and 60 kDa PHEX fragment content are higher in membranes from mineralized osteoblastic cultures versus un-mineralized controls. A, Crude membranes were isolated and assayed for PHEX endopeptidase activity with a specific fluorescent substrate assay as previously described (147). Cultures assayed were either mineralized by addition of BGP (● and \*) or treated with AEBSE to block mineralization (■ and ♦) (188). Individual symbols on the graph represent duplicate analyses. Activity was normalized based on the protein content of membrane preparations. (Data obtained in collaboration with Drs. S. Liu and D. Quarles). B, Crude membranes from mineralizing cultures are enriched in the 60 kDa PHEX band. Comparing the data in Figures 8A and 8B leads to the conclusion that the 60 kDa PHEX band is catalytically active. KEY: +BGP, mineralized; +B + AEBSE, mineralization blocked with AEBSE; -BGP, unmineralized (without BGP); -BGP + AEBSE (without BGP but with AEBSE). (Data obtained in collaboration with Drs. S. Liu and D. Quarles.)

previously been blocked by this transgenic deletion (131). Availability of Sclerostin is also regulated by its interactions with Noggin, with whom it forms tight, mutually inhibitory complexes ( $2.9 \times 10^{-9}$  M) (133). The formation of the Sclerostin-Noggin complex directly neutralizes BMP binding activity and attenuates the effects of these two BMP antagonists. As a result, the net biological effect of Sclerostin may depend upon its balance between various binding partners in the extracellular matrix.

#### 4.16. Tenascin C

A large oligomeric extracellular matrix glycoprotein, Tenascin is also known as hexabrachion or cytostatin due to its hexameric quaternary structure with six arms linked to a central globular domain (134). Its expression is restricted to vertebrate development where it appears during neural crest cell migration and later at sites of cartilage, bone, and tendon formation. Tenascin can function to promote neurite outgrowth *in vitro* and can inhibit cell interactions with fibronectin, where each of these functional interactions is mediated by distinct cell binding sites. Tenascin-C has been proposed to be involved in the development of articular cartilage and in the mechanism by which articular chondrocytes avoid the endochondral ossification process (which occurs with bulk of metaphyseal and diaphyseal chondrocytes) (135). Condensation is a crucial stage in skeletal development. It occurs when a previously dispersed population of cells

gathers together to differentiate into a single cell or tissue type (136). Extracellular matrix molecules, receptors and adhesion molecules such as fibronectin, tenascin-C, syndecan, and N-CAM initiate condensation and set condensation boundaries. Hox genes and other factors like BMPs regulate the proliferation of cells within condensations. Growth of a condensation ceases when Noggin inhibits BMP signaling—which sets up the next stage in development which is overt cell differentiation (135). However, tenascin-C deficient mice generated by two groups (137, 138) show no apparent skeletal phenotype, e.g., normal development and adulthood, life span, and fecundity, as well as normal healing of skin and nerves.

#### 4.17. Phosphate-regulating neutral endopeptidase (PHEX)

Identification of the genetic targets of X-linked hypophosphatemia, autosomal dominant hypophosphatemic rickets (ADHR), X-linked hypophosphatemia (XLH), autosomal recessive hypophosphatemia (ARHP), and hereditary hypophosphatemic rickets with hypercalciuria (HHRH) has identified at least eight genes whose function is required either indirectly or directly to control the systemic phosphate concentration in blood (139-141). One of these is zinc endoprotease PHEX (phosphate-regulating gene with homologies to endopeptidases on the X chromosome) (142). Loss of function mutations in the *Pex* gene cause X-linked hypophosphatemic rickets. A *Pex*

mutation is also responsible for the 'hyp' mouse skeletal phenotype: hypophosphatasia and elevated FGF23 expression (143). The precise function of PHEX is unclear although two genetic rescue studies using bone restricted promoters have demonstrated it has a direct, local effect on bone mineralization as well suggest it has an indirect effect on systemic phosphate homeostasis (129, 144). This conclusion is also supported by results of transplantation of mutant Hyp or control periosteal into wild type or phosphate supplemented Hyp mice and into control or phosphate-depleted normal mice (145). Also, over-expression of human PHEX under the beta-actin promoter seemed to rescue the bone mineralization defect, but did not affect phosphate homeostasis suggesting again independent physiological mechanisms control hyperphosphaturia and bone mineralization in XLH and Hyp (146). Since all three transgenic attempts to replace mutant PHEX in the Hyp mouse were able to at least partially rescue bone mineralization, it is widely believed that PHEX has a role in mineralization of bone.

Using a small peptide substrate, Liu *et al* (147) showed that MEPE binding to PHEX inhibits the peptidase activity of the latter enzyme. Subsequently, McKee and co-workers showed that PHEX can cleave and inactivate the mineralization inhibitory activity of some ASARM peptide isoforms derived from MEPE (148). However, the most highly phosphorylated forms, which are also the predicted to be the most effective minihibins (mineral crystal growth inhibitors), were not effectively cleaved by PHEX. Minihibins is the term coined by Rowe and colleagues to refer to the ASARM peptides representing highly conserved, acidic, protease-resistant C-terminal regions of SIBLING proteins DMP1, BSP and MEPE (149). This latter group has shown that degradation of MEPE, DMP1, and release of SIBLING ASARM-peptides (minihibins) is dramatically increased in the HYP (PHEX-deficient) mouse and that ASARM-peptide(s) are directly responsible for defective mineralization in the HYP skeleton (148, 149). It appears that cathepsin B, a neutral protease, may mediate the accelerated release of ASARM peptides in HYP mice since cathepsin inhibitors rescue the defect (150). While these findings explain a number of features of the bone phenotype associated with loss of PHEX in man and mice, they do not clarify the role of PHEX in normal mineralization of bone.

#### 4.18. Matrix extracellular phosphoglycoprotein (MEPE, OF45)

MEPE, matrix extracellular phosphoglycoprotein, was first isolated from tumor tissue from a patient with oncogenic hypophosphatemia and is capable of inhibiting kidney tubular phosphate re-absorption (151) and absorption by the intestine (152)—features ascribed to phosphatonins, substances acting on multiple organs to regulate phosphate metabolism. It is also highly expressed in osteocytes as compared to osteoblasts. Deletion of this gene in mice results in increased bone formation and bone mass and less trabecular bone loss with age (153) whereas over-expression of MEPE caused a growth and mineralization defect with altered vascularization of bone and kidney (154). MEPE contains a highly phosphorylated C-terminal region called the ASARM peptide. Based on

work with recombinant proteins, PHEX binding to MEPE regulates the proteolytic release of ASARM peptides which act as potent inhibitors of mineralization in the HYP mouse (147) and in X-linked hypophosphatasia (155).

#### 4.19. Functional importance of proteolysis in activation of transglutaminase and PCOLCE

Transglutaminase and PCOLCE [procollagen C-proteinase enhancer] are both required for normal bone formation and mineralization. PCOLCE is a 55 kDa precursor with an elongated structure that enhances the C-terminal processing of type I, II, and III collagen precursors catalyzed by BMP-1 (procollagen C-terminal propeptidase) (156). Following proteolytic activation, a 36 kDa active PCOLCE fragment mediates the effect on BMP-1 via its two CUB domains (157, 158). The C-terminal netrin-like domain of PCOLCE shares sequence homology with a similar domain in metalloproteinases. Although inactive with MMP-2, BMP-1, and ADAMTS, the netrin-like domain can accelerate procollagen processing in the presence of heparin or heparan sulfate glycosaminoglycan chains (159). Thus, PCOLCE alone can increase collagen processing about 10-fold (157), whereas a further increase in rate can be accomplished in association with cell surface heparan sulfate proteoglycans (159). Heparan sulfate proteoglycans are common components of most cell surfaces including osteoblasts.

Interestingly, PCOLCE (-/-) male mice possess larger long bones with altered geometries that increase resistance to loading compared with wild type bones. Female (-/-) long bones did not show this change. Under mechanical testing, null male long bones revealed diminished material properties which apparently were compensated for by adaptive changes in bone geometry, e.g., making the bones bigger. For PCOLCE (-/-) vertebrae, both sexes exhibited diminished mechanical properties relative to controls. Similar to the male long bones, knockout vertebrae were thickened and had more numerous trabeculae with abnormal mineral crystal morphology. All of these findings appear consistent with the observed presence of abnormal collagen fibrils in both mineralized and non-mineralized tissues (160). Thus, PCOLCE is also a determinant of the mechanical and geometrical properties of bone in mammals mediating its effects through fibrillar collagens I, II, and III. It is particularly interesting that treatment of mineralizing osteoblastic cells with covalent serine protease inhibitor AEBSF blocks the activation of PCOLCE-1, while also blocking mineralization (11). Based on these results, activation of PCOLCE represents a protease regulated step in the mineralization pathway resulting in increased collagen fibrillogenesis and deposition.

Since transglutaminases, of which seven TGase genes have been cloned thus far, also require proteolytic activation, we questioned whether this step is also regulated similarly to that for PCOLCE. All TGase enzymes possess a conserved cys-his-aspartic catalytic triad and a calcium-binding domain although individual differences exist, e.g., TGM1 is a transmembrane enzyme and TGM2 contains a unique C-terminal GTPase/ATPase signaling region (161).

## Non-collagenous proteins and biomineralization

The properties and enzymatic functions of TGase I, II, III, and Factor XIII are the most thoroughly studied. Individual TGases are the target genes in several human syndromes: Lamellar Ichthyosis of the skin (TGM1); Peeling Skin Syndrome (TGM5); and unstable blood clots and increased bleeding tendency (Factor XIII). However, at present, a requirement for transglutaminase for mineralization of bone is yet to be firmly established since the TGase II (-/-) mouse exhibits no developmental or postnatal skeletal defects (162, 163). In view of the multiple copies of TGase and their wide distribution, it is likely that functional redundancy could be operative particularly since Factor XIII is expressed by osteoblast lineage cells (164) and is present in plasma.

Despite this, the work of Kartinen and colleagues suggests that transglutaminase II is functionally important for bone formation. They showed that mineralization of MC3T3-E1 (subclone 14) pre-osteoblastic cultures could be blocked completely by treatment with cystamine, a TGase inhibitor (165). Osteoblast differentiation was also blocked as expression of bone sialoprotein, osteocalcin and alkaline phosphatase was diminished. Within bone and in osteoblastic cultures, osteopontin, collagen, and osteocalcin have been consistently shown to be substrates for transglutaminase catalyzed crosslinking (166, 167). Intramolecular crosslinking of osteopontin increases its collagen binding properties five-fold (168). While these, and other (169), studies imply TGase activity may influence bone cell signaling directly or indirectly, supporting conclusive mechanistic evidence is not available. Furthermore, it is unclear whether other transglutaminase isoforms, e.g., TGase III, could also be expressed by osteoblastic cells *in vivo*. Finally, other than for Factor XIII and thrombin, the identity of the cleavage site and of the physiological protease mediating initial activation of bone transglutaminases remains unknown.

### 4.20. Neutral Proteases in Bone

While specific examples of protease actions in bone development and mineralization are given above, it is likely that other functions for proteases in bone will be identified, aside from those associated with osteoclastic bone resorption. For example, during *in vitro* differentiation of tibial derived rat osteoblasts, expression is increased for MMP-2 and MMP-9 and membrane gelatinase MMP-14. These proteases, along with TIMP-1 and TIMP-2, are developmentally regulated in accordance with the maturation stage of the osteoblastic cells. MMP-14 is expressed in differentiating osteoblastic cells and is localized in cells forming nodules. MMP-14 expression *in vivo* in rat tibias (day 7) also shows the highest levels among osteogenic cells, in lining osteoblasts on the newly formed trabeculae under the growth plate and on the endosteal surface of cortical bone (170). MMP-2 (gelatinase-A) and MMP-9, also known as 72 kDa and 92 kDa type IV collagenase, respectively, specifically cleave type IV collagen a major component of basement membranes. No bone phenotype has yet been reported in MMP-2 or MMP-9 null mice (171, 172). BMP-1, a Zn<sup>2+</sup> metalloproteinase, catalyzes biosynthetic processing of most collagens expressed by bone cells as well as other

extracellular proproteins. Actually, BMP-1 comprises a family of four closely related enzymes which may display a redundancy in function (65). This latter point may explain the absence of a dramatic phenotype in BMP-1 null mice (173). Interestingly, transgenic deletion of caspase-3 leads to delayed ossification and decreased bone mineral density (174) due in part to impaired differentiation of bone marrow stromal stem cells. MT1-MMP is a transmembrane protease which acts on extracellular matrix components in the pericellular environment. Its deletion causes no detectable embryonic abnormality, but rather brings about progressive postnatal changes, e.g., craniofacial dysmorphism, osteopenia, arthritis, and dwarfism as well as fibrosis of soft tissues (175, 176). Clarification of a potential mechanism for these changes was provided by Holmebeck K *et al* (177). They showed that collagen cleavage in osteocytes from mice deficient in MT1-MMP was disrupted and ultimately led to the loss of formation of osteocyte cell processes called dendrites important in inter-cellular communication. A potential implication from these static studies is that MT1-MMP mediates an active invasive collagen degradation process during osteocyte embedding.

SKI-1 is a member of the proprotein convertase family of serine proteases (178). PCs are required to process or mature the structure of growth factors, neuropeptides, toxins, glycoproteins, viral capsid proteins, and transcription factors. Transmembrane transcription factor precursors SREBP-1 and -2 are activated in a sequential process involving first SKI-1 cleavage and then S2P protease cleavage (179). After activation, the N-terminal fragments of SREBP-1 and SREBP-2 can be imported into the nucleus where they regulate gene expression by binding to transcriptional promoters containing consensus SRE sequences (180). CREB/ATF family transcription factors [ATF-6, LUMAN (CREB3), OASIS/BBF2H7 (CREB3L2), CREB-H, CREB-4, and AIBZIP/Tisp40 (CREB3L4)] also include transmembrane proteins which require SKI-1 catalyzed release of an N-terminal transcriptionally active fragment. SKI-1 is also an initiator of the unfolded protein response and acts generally to decrease cellular stress by increasing chaperone production, influencing ER-associated degradation of proteins, and regulating membrane remodeling (181).

Recent studies suggest a functional role for SKI-1 in normal bone formation (22). First, the skeletons of mice deficient in SKI-1 activatable transcription factor OASIS exhibit a severe osteopenia characterized by a type I collagen-deficient bone matrix and reduced osteoblastic activity (182, 183). Second, mice over-expressing ICER, a dominant negative effector of CREB/ATF transcription factors, displayed dramatically reduced trabecular bone and a markedly reduced femoral bone formation rate (184). Third, SKI-1 is required for normal cartilage morphogenesis in zebra fish (185). In a similar way, conditional inactivation of SKI-1 in mice using a type II collagen Cre recombinase transgene displayed abnormal calcification of the growth plate (186). Homozygous germ-line deletion of SKI-1 is embryonic lethal in mice (187). Finally, we have recently shown that inhibition of SKI-1 in osteoblastic cultures blocks the deposition of mineral crystals by blocking the expression of mineralization related proteins PHEX, type XI collagen, fibronectin, and DMP1 (188).

## 5. SUMMARY AND PERSPECTIVE

The role of extracellular non-collagenous proteins, cell surface and secreted, in biomineralization has evolved dramatically from initial considerations of calcium binding and cell adhesion. While detailed structure/function relationships are still under investigation, it is now clear that some proteins, such as osteocalcin, act as systemic hormones which serve to integrate the metabolic function of bone, fat and nervous tissues. Others, such as sclerostin, periostin, act as local regulators of the Wnt pathway regulating the osteocyte's response to mechanical loading. Fetuin is now well established as a product of bone cells as well as hepatocytes and plays a role in vascular calcium particle transport. Interestingly, it is now possible to assign roles during biomineralization. Phosphatase Phospho 1, a vesicular component, is required to form the initial mineral crystals *in vitro* and *in vivo*, while alkaline phosphatase and ENPP1 appear to be needed to propagate or grow these initial crystals. Phex, DMP1, and MEPE all participate in the regulation of systemic phosphate, an ion critical for forming calcium hydroxyapatite. Newly identified protein-protein interactions like that proposed for bone sialoprotein and a specific, cationic, alternative splice variant of type XI collagen allow us to localize phosphoprotein nucleators at the gap regions of collagen fibrils within mineralizing osteoid. Also, bone sialoprotein is capable of rescuing catalytically active MMP-2 from previously inactive TIMP-MMP-2 complexes. Recent studies also suggest that hydroxyapatite crystals themselves may directly influence the catalytic function of metalloproteinases present within mineralized bone and cartilage. Finally, it now appears that expression of a number of mineralization related extracellular matrix proteins may be regulated in a common pathway. However, further work is needed to determine the extent to which the catalytic and inhibitor specificities of individual enzymes such as PHEX can be modified. Conceptually as well, the model of bone biomineralization proposed by Hunter *et al.* (76) has moved from a fixed epitaxial view of protein-mineral crystal interactions consistent with invertebrate shells to a less organized "flexible polyelectrolyte" model which reflects two decades of structural studies on acidic phosphoproteins such as osteopontin and bone sialoprotein.

## 6. ACKNOWLEDGEMENTS

JPG wishes to thank Mrs. Nichole T. Huffman for her excellent work in performing experimental work described here as well as the ongoing support of the UMKC Bone Group, the Center of Excellence in Mineralized Tissues, and the faculty of the Oral Biology Department of UMKC. Special thanks also to collaborators Drs. R.J. Midura, Julie T. Oxford, Peter Rowe, L. Darryl Quarles, and Nabil G. Seidah. Supported by NIH grant AR052775, UMKC Center of Excellence in Mineralized Tissues, the Patton Trust and the Kansas City Life Science Board, and the University of Missouri Research Board.

## 7. REFERENCES

1. Bjorn R. Olsen: Bone Embryology. In: Primer on the Metabolic Bone Diseases and Disorders of Mineral Metabolism. Ed: Murry J. Favus, American Society for Bone and Mineral Research, Washington, DC (2006)
2. Charles H. Turner, T A. Woltman, D A. Belongia: Structural changes in rat bone subjected to long-term, *in vivo* mechanical loading. *Bone* 13, 417-422 (1992)
3. Jeffrey P. Gorski: Is all bone the same? Distinctive distributions and properties of non-collagenous matrix proteins in lamellar vs. woven bone imply the existence of different underlying osteogenic mechanisms. *Crit Rev Oral Biol Med* 9, 201-223 (1998)
4. Edward D. Simmons Jr., Kenneth P. Pritzker, Marc D. Grynbas: Age-related changes in the human femoral cortex. *J Orthop Res* 9, 155-167 (1991)
5. Ermanno Bonucci: Comments on the ultrastructural morphology of the calcification process: an attempt to reconcile matrix vesicles, collagen fibrils, and crystal ghosts. *Bone and Mineral* 17, 219-222 (1992)
6. H. Clarke Anderson: Molecular biology of matrix vesicles. *Clin Orthop Relat Res* 314, 266-280 (1995)
7. Theodore Kirsch, Gerald Harrison, Ellis E. Golub, Hyun-Duck Nah: The roles of annexins and types II and X collagen in matrix vesicle mediated mineralization of growth plate cartilage. *J Biol Chem* 275, 35577-35583 (2000)
8. Manisha C. Yadav, Ana M. Simão, Sonoko Narisawa, Carmen Huesa, Marc D. McKee, Colin Farquharson, Jose Luis Millán: Loss of skeletal mineralization by the simultaneous ablation of PHOSPHO1 and alkaline phosphatase function - A unified model of the mechanisms of initiation of skeletal calcification. *J Bone Miner Res* Aug 3 (2010) [Epub ahead of print]
9. Jeffrey P. Gorski, Amin Wang, Dina Lovitch, Douglas Law, Kathryn Powell, Ronald J. Midura: Extracellular bone acidic glycoprotein-75 defines condensed mesenchyme regions to be mineralized and localizes with bone sialoprotein during intramembranous bone formation. *J Biol Chem* 279, 25455-25463 (2004)
10. Ronald J. Midura, Amin Wang, Dina Lovitch, Douglas Law, Kathryn Powell, Jeffrey P. Gorski: Bone acidic glycoprotein-75 delineates the extracellular sites of future bone sialoprotein accumulation and apatite nucleation in osteoblastic cultures. *J Biol Chem* 279, 25464-25473 (2004)
11. Nichole T. Huffman, John A. Keightley, Cui Chaoying, Ronald J. Midura, Dinah Lovitch, Patricia A. Veno, Sarah L. Dallas, Jeffrey P. Gorski: Association of specific proteolytic processing of bone sialoprotein and bone acidic glycoprotein-75 with mineralization within biomineralization foci. *J Biol Chem* 282, 26002-26013 (2007)



## Non-collagenous proteins and biomineralization

12. Ermanno Bonucci: Ultrastructural organic-inorganic relationships in calcified tissues: cartilage and bone versus enamel. *Connect Tissue Res* 33, 157-162 (1995)
13. J E. Aaron, B Oliver, N Clarke, D H. Carter, D.H: Calcified microspheres as biological entities and their isolation from bone. *Histochem J* 31, 455-470 (1999)
14. Melvin J. Glimcher: Mechanism of calcification: role of collagen fibrils and collagen-phosphoprotein complexes *in vitro* and *in vivo*. *Anat Rec* 224, 139-153(1989)
15. Arthur Veis, R J. Schlueter: The macromolecular organization of dentine matrix collagen. 1. Characterization of dentine collagen. *Biochemistry* 3, 1650-1657 (1964)
16. Melvin J. Glimcher, C J. Francois, L Richards, Stephen M. Krane: The presence of organic phosphorus in collagens and gelatins. *Biochim Biophys Acta* 93, 585-602 (1964)
17. Paul A. Price, D Toroian, J E. Lim: Mineralization by inhibitor exclusion: the calcification of collagen with fetuin. *J Biol Chem* 284, 17092-17101 (2009)
18. Aimin Wang, James A. Martin, Lois A. Lembke, Ronald J. Midura: Reversible Suppression of *in vitro* Biomineralization by Activation of Protein Kinase A. *J Biol Chem* 275, 11082-11091(2000)
19. Chianyi Wang, Yang Wang, Nichole T. Huffman, Chaoying Cui, Yao, Sharon Midura, Ronald J. Midura, Jeffrey P. Gorski: Confocal laser raman microspectroscopy of biomineralization foci in UMR 106 osteoblastic cultures reveals temporally synchronized protein changes preceding and accompanying mineral crystal deposition. *J Biol Chem* 284, 7100-7113 (2009)
20. Ermanno Bonucci: In Biological Calcification, Normal and Pathological Processes in the Early Stages, p.195. Springer-Verlag, New York.
21. Jeffrey P. Gorski, David Griffin, Gerry Dudley, Clarke Stanford, Randy Thomas, Conway Huang, Eugene Lai, Bradley Karr, Micheal Solursh: Bone acidic glycoprotein-75 is a major synthetic product of osteoblastic cells and localized as 75- and/or 50-kDa forms in mineralized phases of bone and growth plate and in serum. *J Biol Chem* 265, 14956-14963 (1990)
22. Jeffrey P. Gorski, Nichole T. Huffman, Chaoying Cui, Ellen Henderson, Sharon B. Midura, Nabil G. Seidah: Potential role of proprotein convertase SKI-1 in the mineralization of primary bone. *Cells Tissues Organs* 189, 25-32 (2009)
23. Aram S. Elagoz, Suzanne Benjannet, Aida Mammabassi, Louise Wickham, Nabil G. Seidah: Biosynthesis and cellular trafficking of the convertase SKI-1/S1P: ectodomain shedding requires SKI-1 activity. *J Biol Chem* 277, 11265-11275 (2002)
24. Nabil G. Seidah, Seyed J. Mowla, Josee Hamelin, Aida M. Mammabachi, Suzanne Benjannet, Barry B. Touré, Ajoy Basak, Jon Scott Munzer, Jadwiga Marcinkiewicz, Mei Zhong, Jean-Christophe Barale, Claude Lazure, Richard A. Murphy, Michel Chrétien, Mieczyslaw Marcinkiewicz: Mammalian subtilisin/kexin isozyme SKI-1: A widely expressed proprotein convertase with a unique cleavage specificity and cellular localization. *Proc Natl Acad Sci U S A* 96, 1321-1326 (1999)
25. Jeff P. Gorski, Nichole T. Huffman, Sridar Chittur, Ronald J. Midura, Claudine Black, Julie Oxford, Nabil G. Seidah: Inhibition of SKI-1 Proprotein Convertase Blocks Transcription of Key Extracellular Matrix Genes Regulating Osteoblastic Mineralization. *J Biol Chem* 285, in press (2010)
26. Alan Boyde, Jona J. Sela: Scanning electron microscope study of separated calcospherites from the matrices of different mineralizing systems. *Calcif Tissue Res* 26, 47-49 (1978)
27. Ermanno Bonucci: Comments on the ultrastructural morphology of the calcification process: an attempt to reconcile matrix vesicles, collagen fibrils, and crystal ghosts. *Bone and Mineral* 17, 219-222 (1992)
28. Jean E. Aaron, Barry Oliver, Noel Clarke, D. Howard Carter: Calcified microspheres as biological entities and their isolation from bone. *Histochem J* 31, 455-470 (1999)
29. Ronald J. Midura, A Vasanthi, X Su, A Wang, Sharon B. Midura, Jeff P. Gorski: Calcospherulites isolated from the mineralization front of bone induce the mineralization of type I collagen. *Bone* 41, 1005-1016 (2007)
30. Ronald J. Midura, A Vasanthi, X Su, Sharon B. Midura, Jeff P. Gorski: Isolation of calcospherulites from the mineralization front of bone. *Cells Tissues Organs* 189, 75-9 (2009)
31. Ermanno Bonucci: Fine structure of early cartilage calcification. *J Ultrastruct Res* 20, 33-50 (1967)
32. H. Clarke Anderson: Electron microscopic studies of induced cartilage development and calcification. *J Cell Biol* 35, 81-101 (1967)
33. H. Clarke Anderson, Joseph B. Sipe, Lovisa Hessle, Rama Dhanyamraju, Elisa Atti, Nancy P. Camacho, Jose Luis Millán: Impaired calcification around matrix vesicles of growth plate and bone in alkaline phosphatase-deficient mice. *Am J Pathol* 164, 841-847 (2004)
34. Zhen Xiao, Corinne E. Camalier, Kunio Nagashima, King C. Chan, David A. Lucas, M. Jason de la Cruz, Michelle Gignac, Stephen Lockett, Haleem J. Issaq, Timothy D. Veenstra, Thomas P. Conrads, George R. Beck Jr: Analysis of the extracellular matrix vesicle proteome in mineralizing osteoblasts. *J Cell Physiol* 210, 325-335 (2007)
35. Adele L. Boskey: Matrix proteins and mineralization: an overview. *Connect Tissue Res* 35, 357-363 (1996)

36. Pam G. Robey: Vertebrate mineralized matrix proteins: structure and function. *Connect Tissue Res* 35, 131-136 (1996)
37. Chunlin Qin, Otto Baba, William T. Bulter: Post-translational modifications of sibling proteins and their roles in osteogenesis and dentinogenesis. *Crit Rev Oral Biol Med* 15, 126-136 (2004)
38. Larry W. Fisher, S. William Whitson, Louis V. Avioli, John D. Termine: Matrix sialoprotein of developing bone. *J Biol Chem* 258, 12723-12727 (1983)
39. Geoffrey M. Herring: (1972) in *The Biochemistry and Physiology of Bone* (Bourne, G. H., ed) Vol. 1, pp. 127-189, Academic Press, New York.
40. Graeme K. Hunter, Harvey A. Goldberg: Nucleation of hydroxyapatite by bone sialoprotein. *Proc Natl Acad Sci U S A* 90, 8562-8565 (1993)
41. Graeme K. Hunter, Michael S. Poitras, T. Michael Underhill, Marc D. Grynblas, Harvey A. Goldberg: Induction of collagen mineralization by a bone sialoprotein--decorin chimeric protein. *Biomed Mater Res* 55, 496-502 (2001)
42. Jonathan A.R. Gordon, Coralee E. Tye, Arthur V. Sampaio, T. Michael Underhill, Graeme K. Hunter, Harvey A. Goldberg: Bone sialoprotein expression enhances osteoblast differentiation and matrix mineralization *in vitro*. *Bone* 41, 462-473 (2007)
43. Gurpreet S. Baht, Graeme K. Hunter, Harvey A. Goldberg: Bone sialoprotein-collagen interaction promotes hydroxyapatite nucleation. *Matrix Biol* 27, 600-608 (2008)
44. Gurpreet S. Baht, Jason O'Young, Antonia Borovina, Hong Chen, Coralee E. Tye, Mikko Karttunen, Gilles A. Lajoie, Graeme K. Hunter, Harvey A. Goldberg: Phosphorylation of Ser136 is critical for potent bone sialoprotein-mediated nucleation of hydroxyapatite crystals. *Biochem J* 428, 385-395 (2010)
45. Keith P. Mintz, Wojciech J. Grzesik, Ronald J. Midura, Pamela G. Robey, John D. Termine, Larry W. Fisher: Purification and fragmentation of nondenatured bone sialoprotein: evidence for a cryptic, RGD-resistant cell attachment domain. *J Bone Miner Res* 8, 985-995, 1993.
46. John T. Stubbs 3rd, Keith P. Mintz, Edward D. Eanes, Dennis A. Torchia, Larry W. Fisher: Characterization of native and recombinant bone sialoprotein: delineation of the mineral-binding and cell adhesion domains and structural analysis of the RGD domain. *J Bone Miner Res* 12, 1210-1222 (1993)
47. Luc Malaval, Laurent Monfoulet, Thierry Fabre, Laurent Pothuau, Reine Bareille, Sylvain Miraux, Eric Thiaudiere, Gerard Raffard, Jean-Michel Franconi, Marie-Helene Lafage-Proust, Jane E. Aubin, Laurence Vico, Joelle Amédée: Absence of bone sialoprotein (BSP) impairs cortical defect repair in mouse long bone. *Bone* 45, 853-861 (2009)
48. Laurent Monfoulet, Luc Malaval, Jane E. Aubin, Susan R. Rittling, Alain P. Gadeau, Jean-Christophe Fricain, Olivier Chassande: Bone sialoprotein, but not osteopontin, deficiency impairs the mineralization of regenerating bone during cortical defect healing. *Bone* 46, 447-452 (2009)
49. Ndeye M. Wade-Gueye, Maya Boudiffa, Norbert Laroche, Arnaud Vanden-Bossche, Carole Fournier, Jane E. Aubin, Laurence Vico, Marie-Helene Lafage-Proust, Luc Malaval: Mice Lacking Bone Sialoprotein (BSP) Lose Bone after Ovariectomy and Display Skeletal Site-Specific Response to Intermittent PTH Treatment. *Endocrinology* 2010 Sep 15. [Epub ahead]
50. Maya Boudiffa, Ndeye M. Wade-Gueye, Alain Guignandon, Arnaud Vanden-Bossche, Odile Sabido, Jane E. Aubin, Pierre Jurdic, Laurence Vico, Marie Helene Lafage-Proust, Luc Malaval: Bone Sialoprotein deficiency impairs osteoclastogenesis and mineral resorption *in vitro*. *J Bone Miner Res* 2010 Sep 1. [Epub ahead of print]
51. Luc Malaval, Ndeye M. Wade-Guéye, Maya Boudiffa, Jia Fei, Ralph Zirngibl, Frieda Chen, Norbert Laroche, Jean-Paul Roux, Brigitte Burt-Pichat, Francois Duboeuf, Georges Boivin, Pierre Jurdic, Marie-Helene Lafage-Proust, Joelle Amédée, Laurence Vico, Janet Rossant, Jane E. Aubin: Bone sialoprotein plays a functional role in bone formation and osteoclastogenesis. *J Exp Med* 205, 1145-1153 (2008)
52. Jonathan A. Gordon, Coralee E. Tye, Arthur V. Sampaio, T. Michael Underhill, Graeme K. Hunter, Harvey A. Goldberg: Bone sialoprotein expression enhances osteoblast differentiation and matrix mineralization *in vitro*. *Bone* 41, 462-473 (2007)
53. Jonathan A. Gordon, Graeme K. Hunter, Harvey A. Goldberg: Activation of the mitogen-activated protein kinase pathway by bone sialoprotein regulates osteoblast differentiation. *Cells Tissues Organs* 189, 138-143 (2009)
54. Paul Curtin, Kevin P. McHugh, Hia-Yan Zhou, Rudolf Flückiger, Paul Goldhaber, Frank G. Oppenheim, Erdjan Salih: Modulation of bone resorption by phosphorylation state of bone sialoprotein. *Biochemistry* 48, 6876-6886 (2009)
55. Masahiko Sato, William Grasser, Sandy Harm, Colleen Fullenkamp, Jeffrey P. Gorski: Bone acidic glycoprotein 75 inhibits resorption activity of isolated rat and chicken osteoclasts. *FASEB J* 6, 2966-2976 (1992)
56. Coralee E. Tye, Rattray, Kevin R. Warner, Jonathan A. Gordon, Jaro Sodek, Graeme K. Hunter, Harvey A. Goldberg: Delineation of the hydroxyapatite-nucleating

## Non-collagenous proteins and biomineralization

domains of bone sialoprotein. *J Biol Chem* 278, 7949–7955 (2003)

57. Adele L. Boskey: Osteopontin and related phosphorylated sialoproteins: effects on mineralization. *Ann N Y Acad Sci* 760, 249-256 (1995)

58. Lisa R. Warner, Christina M. Blasick, Raquel J. Brown, Julia T. Oxford: Expression, purification, and refolding of recombinant collagen alpha1(XI) amino terminal domain splice variants. *Protein Expr Purif* 52, 403-409 (2007)

59. Nicholas P. Morris, Julia Thom Oxford, Gillian B.M. Davies, Barbara F. Smoody, Douglas R. Keene: Developmentally regulated alternative splicing of the alpha1(XI) collagen chain: spatial and temporal segregation of isoforms in the cartilage of fetal rat long bones. *J Histochem Cytochem* 48, 725-741 (2000)

60. Uwe Hansen, Peter Bruckner: Macromolecular specificity of collagen fibrillogenesis: fibrils of collagens I and XI contain a heterotypic alloyed core and a collagen I sheath. *J Biol Chem* 278, 37352-37359 (2003)

61. David R. Eyre, Mary Ann Weis, Jiann-Jiu Wu: Advances in collagen cross-link analysis. *Methods* 45, 65-74 (2008)

62. Lisa J. Brunet, Jill A. McMahon, Andrew P. McMahon, Richard M. Harland: Noggin, cartilage morphogenesis, and joint formation in the mammalian skeleton. *Science* 280, 1455-1457 (1998)

63. Jill A. McMahon, Shinji Takada, Lyle B. Zimmerman, Chen-Ming Fan, Richard M. Harland, Andrew P. McMahon: Noggin-mediated antagonism of BMP signaling is required for growth and patterning of the neural tube and somite. *Genes Dev* 12, 1438-1452 (1998)

64. Jay Groppe, Jason Greenwald, Ezra Wiater, Joaquin Rodriguez-Leon, Aris N. Economides, Witek Kwiakowski, Markus Affolter, Wylie W. Vale, Juan Carlos Belmonte, Senyon Choe: Structural basis of BMP signalling inhibition by the cystine knot protein Noggin. *Nature* 420, 636-642 (2002)

65. Ian C. Scott, Ira L. Blitz, William N. Pappano, Yasutada Imamura, Timothy G. Clark, Barry M. Steiglitz, Christina L. Thomas, Sarah A. Maas, Kazuhiko Takahara, Ken W.Y. Cho, Daniel S. Greenspan: Mammalian BMP-1/Tolloid-related metalloproteinases, including novel family member mammalian Tolloid-like 2, have differential enzymatic activities and distributions of expression relevant to patterning and skeletogenesis. *Dev Biol* 213, 283-300 (1999)

66. Fiona C. Wardle, Jennifer V. Welch, Leslie Dale: Bone morphogenetic protein 1 regulates dorsal-ventral patterning in early *Xenopus* embryos by degrading chordin, a BMP4 antagonist. *Mech Dev* 86, 75-85 (1999)

67. Tomoo Yamate, Hanna Mocharla, Yasuto Taguchi, Joseph U. Igietsme, Stavros C. Manolagas, Etsuko Abe: Osteopontin expression by osteoclast and osteoblast progenitors in the murine bone marrow: demonstration of its requirement for osteoclastogenesis and its increase after ovariectomy. *Endocrinology* 138, 3047-3055 (1997)

68. Tohru Ikeda, Shintaro Nomura, Akira Yamaguchi, Tatsuo Suda, Shusaku Yoshiki: *In situ* hybridization of bone matrix proteins in undecalcified adult rat bone sections. *J Histochem Cytochem* 40, 1079-1088 (1992)

69. Karen Merry, Robert Dodds, Amanda Littlewood, Maxine Gowen: Expression of osteopontin mRNA by osteoclasts and osteoblasts in modelling adult human bone. *J Cell Sci* 104, 1013-1020 (1993)

70. Ahnders Franzén, Kjell Hulténby, Finn P. Reinholt, Patrik Önerfjörð, Dick Heinegård: Altered osteoclast development and function in osteopontin deficient mice. *J Orthop Res* 26, 721-728 (2008)

71. Yoshinori Asou, Susan R. Rittling, Hiroyuki Yoshitake, Kunikazu Tsuji, Kenichi Shinomiya, Akira Nifuji, David T. Denhardt, Masaki Noda: Osteopontin facilitates angiogenesis, accumulation of osteoclasts, and resorption in ectopic bone. *Endocrinology* 142, 1325-1332 (2001)

72. Hideyo Ihara, David T. Denhardt, Koichi Furuya, Teruhito Yamashita, Yukari Muguruma, Kunikazu Tsuji, Keith A. Hruska, Kanji Higashio, Shoji Enomoto, Akira Nifuji, Susan R. Rittling, Masaki Noda: Parathyroid hormone-induced bone resorption does not occur in the absence of osteopontin. *J Biol Chem* 276, 13065-13071 (2001)

73. Keiichiro Kitahara, Muneaki Ishijima, Susan R. Rittling, Kunikazu Tsuji, Hisashi Kurosawa, Akira Nifuji, David T. Denhardt, Masaki Noda: Osteopontin deficiency induces parathyroid hormone enhancement of cortical bone formation. *Endocrinology* 144, 2132-2140 (2003)

74. Arne Gericke, Chunlin Qin, Lyudmila Spevak, Fujimoto, William T. Butler, Esben S. Sørensen ES, Adele L. Boskey: Importance of phosphorylation for osteopontin regulation of biomineralization. *Calcif Tissue Int* 77, 45-54 (2005)

75. Shuichi Jono, Christopher Peinado, Cecilia M. Giachelli: Phosphorylation of osteopontin is required for inhibition of vascular smooth muscle cell calcification. *J Biol Chem* 275, 20197-20203 (2000)

76. Graeme K. Hunter, Jason O'Young, Bernd Grohe, Mikko Karttunen, Harvey A. Goldberg: The Flexible Polyelectrolyte Hypothesis of Protein-Biomineral Interaction. *Langmuir* Jun 8, 2010 [Epub ahead of print].

77. Neal S. Fedarko, Alka Jain, Abdullah Karadag, Larry W. Fisher: Three small integrin binding ligand N-linked glycoproteins (SIBLINGs) bind and activate specific matrix metalloproteinases. *FASEB J* 18, 734-736 (2004)

78. Alka Jain, Larry W. Fisher LW, Neal S. Fedarko: Bone sialoprotein binding to matrix metalloproteinase-2 alters enzyme inhibition kinetics. *Biochemistry* 47, 5986-5995.
79. Alka Jain, Abdullah Karadag, Larry W. Fisher, Neal S. Fedarko: Structural requirements for bone sialoprotein binding and modulation of matrix metalloproteinase-2. *Biochemistry* 47, 10162-10170 (2008)
80. Akeila Bellahcène, Vincent Castronovo, Kalu U.E. Ogbureke, Larry W. Fisher, Neal S. Fedarko: Small integrin-binding ligand N-linked glycoproteins (SIBLINGs): multifunctional proteins in cancer. *Nat Rev Nat Rev* 8, 212-226 (2008)
81. Jeffrey P. Gorski, Katsuji Shimizu: Isolation of new phosphorylated glycoprotein from mineralized phase of bone that exhibits limited homology to adhesive protein osteopontin. *J Biol Chem* 263, 15938-15945 (1988)
82. Jeffrey P. Gorski, Edward A. Kremer, Yan Chen, Steve Ryan, Colleen Fullenkamp, John Delviscio, Karen Jensen, Marc D. McKee: Bone acidic glycoprotein-75 self-associates to form macromolecular complexes *in vitro* and *in vivo* with the potential to sequester phosphate ions. *J Cell Biochem* 64, 547-64 (1997)
83. Edward A. Kremer, Yan Chen, Ko Suzuki, Hideaki Nagase, Jeffrey P. Gorski: Hydroxyapatite induces autolytic degradation and inactivation of matrix metalloproteinase-1 and -3. *J Bone Miner Res* 13, 1890-1902 (1998)
84. Mary MacDougall, Ting Tin Gu, Xinghong Luan, Darrin Simmons, Jinkun Chen: Identification of a novel isoform of mouse dentin matrix protein 1: spatial expression in mineralized tissues. *J Bone Miner Res* 13, 422-431 (1998)
85. Satoru Toyosawa, Satoru Shintani S, Taku Fujiwara, Takashi Ooshima, Atsushige Sato, Naokuni Ijuhin N, Toshihisa Komori: Dentin matrix protein 1 is predominantly expressed in chicken and rat osteocytes but not in osteoblasts. *J Bone Miner Res* 16, 2017-2026 (2001)
86. Zofia von Marschall, Larry W. Fisher: Dentin sialophosphoprotein (DSPP) is cleaved into its two natural dentin matrix products by three isoforms of bone morphogenetic protein-1 (BMP1) *Matrix Biol* 29, 295-303. Epub Jan 15 (2010)
87. Barry M. Steiglit, Melvin Ayala, Karthikeyan Narayanan, Anne George, Daniel S. Greenspan: Bone morphogenetic protein-1/Tolloid-like proteinases process dentin matrix protein-1. *J Biol Chem* 279, 980-986 (2004)
88. Zofia von Marschall, Larry W. Fisher: Dentin matrix protein-1 isoforms promote differential cell attachment and migration. *J Biol Chem* 283, 32730-32740 (2008)
89. Philippe H. Tartaix, Marie Doulaverakis, Anne George, Larry W. Fisher, William T. Butler, Chunlin Qin, Erdjan Salih, Melin Tan, Yukiji Fujimoto, Lyudmila Spevak, Adele L. Boskey: *In vitro* effects of dentin matrix protein-1 on hydroxyapatite formation provide insights into *in vivo* functions. *J Biol Chem* 279, 18115-18820 (2004)
90. Sivakumar Gajjeraman, Karthikeyan Narayanan, Jianjun Hao, Chunlin Qin, Anne George: Matrix macromolecules in hard tissues control the nucleation and hierarchical assembly of hydroxyapatite. *J Biol Chem* 282, 1193-1204 (2007)
91. Gericke A, Qin C, Sun Y, Redfern R, Redfern D, Fujimoto Y, Taleb H, Butler WT, Adele L. Boskey: Different forms of DMP1 play distinct roles in mineralization. *J Dent Res* 89, 355-359 (2010)
92. Jian Q. Feng, Leanne M. Ward, Shiguang Liu, Yongbo Lu, Yixia Xie, Baozhi Yuan, Xijie Yu, Frank Rauch, Siobhan Davis, Shubin Zhang, Hector Rios, Marc K. Drezner, L. Darryl Quarles, Lynda F. Bonewald, Kenneth E. White: Loss of DMP1 causes rickets and osteomalacia and identifies a role for osteocytes in mineral metabolism. *Nat Genet* 38, 1310-1315 (2006)
93. Bettina Lorenz-Depiereux, Murat Bastepe, Anna Benet-Pagès, Mustapha Amyere, Janine Wagenstaller, Ursula Müller-Barth, Klaus Badenhoop, Stephanie M. Kaiser, Roger S. Rittmaster, Alan H. Shlossberg, Jose L. Olivares, Cesar Loris, Feliciano J. Ramos, Francis Glorieux, Miikka Vakkula, Harald Jüppner, Tim M. Strom: DMP1 mutations in autosomal recessive hypophosphatemia implicate a bone matrix protein in the regulation of phosphate homeostasis. *Nat Genet* 38, 1248-1250 (1995)
94. Yongbon Lu, Chunlin Qin, Yixia Xie, Lynda F. Bonewald, Jian Q. Feng: Studies of the DMP1 57-kDa functional domain both *in vivo* and *in vitro*. *Cells Tissues Organs* 189, 175-185 (2009)
95. Yunfeng Ling, Hector F. Rios, Elizabeth R. Myers, Yongbo Lu, Jian Q. Feng, Adele L. Boskey: DMP1 depletion decreases bone mineralization *in vivo*: an FTIR imaging analysis. *J Bone Miner Res* 20, 2169-2177.
96. Shiguang Liu, Jianping Zhou, Wen Tang, Rochelle Menard, Jian Q. Feng, L. Darryl Quarles: Pathogenic role of Fgf23 in Dmp1-null mice. *Am J Physiol Endocrinol Metab* 295, E254-E261 (2008)
97. James W. Poser, Fred S. Esch, Nicholas C. Ling, Paul A. Price: Isolation and sequence of the vitamin K-dependent protein from human bone. Undercarboxylation of the first glutamic acid residue. *J Biol Chem* 255, 8685-8691 (1980)
98. Patricia Ducy, Christelle Desbois, Brendan Boyce, Gerald Pinero, Beryl Story, Colin Dunstan, Erica Smith, Jeffrey Bonadio, Steven Goldstein, Caren Gundberg, Allan Bradley, Gerard Karsenty: Increased bone formation in osteocalcin-deficient mice. *Nature* 382, 448-452 (1996)
99. Mathieu Ferron, Jianwen Wei, Tatsuya Yoshizawa, Andrea Del Fattore, Ronald A. DePinho, Anna Teti, Patricia Ducy, Gerard Karsenty: Insulin signaling in

## Non-collagenous proteins and biomineralization

osteoblasts integrates bone remodeling and energy metabolism. *Cell* 142, 296-308 (2010)

100. Carlo Foresta, Giacomo Strapazzon, Luca De Toni, Lisa Ganesello, Alessandra Calcagno, Catia Pilon, Mario Plebani, Roberto Vettor: Evidence for osteocalcin production by adipose tissue and its role in human metabolism. *J Clin Endocrinol Metab* 95, 3502-3506 (2010)

101. Tomokazu Ohnishi, Osamu Nakamura, Masayuki Ozawa, Naokatu Arakaki, Takashi Muramatsu, Yasushi Daikuhara: Molecular cloning and sequence analysis of cDNA for a 59 kD bone sialoprotein of the rat: demonstration that it is a counterpart of human alpha 2-HS glycoprotein and bovine fetuin. *J Bone Miner Res* 8, 367-377 (1993)

102. Willi Jahnen-Dechent, Cora Schäfer, Alexander Heiss, Joachim Grötzinger: Systemic inhibition of spontaneous calcification by the serum protein alpha 2-HS glycoprotein/fetuin. *Z Kardiol* 90 (Suppl 3), 47-56 (2001)

103. Alexander Heiss, Alexander DuChesne, Bernd Denecke, Joachim Grötzinger, Kazuhiko Yamamoto, Thomas Renné, Willi Jahnen-Dechent: Structural basis of calcification inhibition by alpha 2-HS glycoprotein/fetuin-A. Formation of colloidal calciprotein particles. *J Biol Chem* 278, 13333-13341 (2003)

104. Alexander Heiss, Willi Jahnen-Dechent, Hisako Endo, Dietmar Schwahn D: Structural dynamics of a colloidal protein-mineral complex bestowing on calcium phosphate a high solubility in biological fluids. *Biointerphases* 2, 16-20 (2007)

105. Alexander Heiss, Thomas Eckert, Anke Aretz, Walter Richtering, Wim van Dorp, Cora Schäfer, Willi Jahnen-Dechent: Hierarchical role of fetuin-A and acidic serum proteins in the formation and stabilization of calcium phosphate particles. *J Biol Chem* 283, 14815-14825 (2008)

106. Willi Jahnen-Dechent, Cora Schäfer, Markus Ketteler, Marc D. McKee: Mineral chaperones: a role for fetuin-A and osteopontin in the inhibition and regression of pathological calcification. *J Mol Med* 86, 379-389 (2008)

107. Christophe N. Rochette, Sabine Rosenfeldt, Alexander Heiss, Theyencheri Narayanan, Matthias Ballauff, Willi Jahnen-Dechent: A shielding topology stabilizes the early stage protein-mineral complexes of fetuin-A and calcium phosphate: a time-resolved small-angle X-ray study. *ChemBiochem* 10, 735-740 (2009)

108. Nicholas J. Hamlin, Karen G. Ong, Paul A. Price: A serum factor that recalcifies demineralized bone is conserved in bony fish and sharks but is not found in invertebrates. *Calcif Tissue Int* 78, 326-334 (2006)

109. Takeshi G. Kashima, Takashi Nishiyama, Kazuhiro Shimazu, Masahi Shimazaki, Isao Kii, Agamemnon E. Grigoriadis, Masashi Fukayama, Akira Kudo: Periostin, a

novel marker of intramembranous ossification, is expressed in fibrous dysplasia and in c-Fos-overexpressing bone lesions. *Hum Pathol* 40, 226-237 (2008)

110. George R. Beck Jr, Elizabeth Moran, Nicole Knecht: Inorganic phosphate regulates multiple genes during osteoblast differentiation, including Nrf2. *Exp Cell Res* 288, 288-300 (2003)

111. Keisuke Horiuchi, Norio Amizuka, Sunao Takeshita, Hiroyuki Takamatsu, Mieko Katsuura, Hidehiro Ozawa, Yoshiaki Toyama, Lynda F. Bonewald, Akira Kudo: Identification and characterization of a novel protein, periostin, with restricted expression to periosteum and periodontal ligament and increased expression by transforming growth factor beta. *J Bone Miner Res* 14, 1239-1249 (1999)

112. Hector Rios, Shrinagesh V. Koushik, Haiyan Wang, Jian Wang, Hong-Ming Zhou, Andrew Lindsley, Rhonda Rogers, Zhi Chen, Manabu Maeda, Agnieszka Kruzynska-Freitag, Jian Q. Feng, Simon J. Conway: Periostin null mice exhibit dwarfism, incisor enamel defects, and an early-onset periodontal disease-like phenotype. *Mol Cell Biol* 25, 11131-11144 (2005)

113. Nicholas Bonnet, Kara N. Standley, Estelle N. Bianchi, Vincent Stadelmann, Michelangelo Foti, Simon J. Conway, Serge L. Ferrari: The matricellular protein periostin is required for sost inhibition and the anabolic response to mechanical loading and physical activity. *J Biol Chem* 284, 35939-35950 (2009)

114. Takumi Maruhashi, Isao Kii, Mitsuru Saito, Akira Kudo: Interaction between periostin and BMP-1 promotes proteolytic activation of lysyl oxidase. *J Biol Chem* 285, 13294-13303 (2010)

115. Sylvie Ricard-Blum, Simonetta Bernocco, Bernard Font, Catherine Moali, Denise Eichenberger, Jean Farjanel, Elmar R. Burchardt, Michel van der Rest, Efrat Kessler, David J.S. Hulmes: Interaction properties of the procollagen C-proteinase enhancer protein shed light on the mechanism of stimulation of BMP-1. *J Biol Chem* 277, 33864-33869 (2002)

116. Ronald Jemmerson, Martin G. Low: Phosphatidylinositol anchor of HeLa cell alkaline phosphatase. *Biochemistry* 26, 5703-5709 (1987)

117. Andrew D. Howard, Joel Berger, Louise Gerber, Philip Familletti, Sidney Udenfriend: Characterization of the phosphatidylinositol-glycan membrane anchor of human placental alkaline phosphatase. *Proc Natl Acad Sci U S A* 84, 6055-6059 (1987)

118. Atsushi Suzuki, Osamu Kozawa, Jun Shinoda, Yasuko Watanabe, Hidehiko Saito, Yutaka Oiso: Thrombin induces proliferation of osteoblast-like cells through phosphatidylcholine hydrolysis. *J Cell Physiol* 168, 209-216 (1996)

## Non-collagenous proteins and biomineralization

119. Scott J. Roberts, Alan J. Stewart, Peter J. Sadler, Colin Farquharson: Human PHOSPHO1 exhibits high specific phosphoethanolamine and phosphocholine phosphatase activities. *Biochem J* 382, 59-65 (2004)
120. Brian Houston, Alan J. Stewart, Colin Farquharson: PHOSPHO1-A novel phosphatase specifically expressed at sites of mineralisation in bone and cartilage. *Bone* 34, 629-637 (2004)
121. Alan J. Stewart, Scott J. Roberts, Elaine Seawright, Megan G. Davey, Robert H. Fleming, Colin Farquharson: The presence of PHOSPHO1 in matrix vesicles and its developmental expression prior to skeletal mineralization. *Bone* 39, 1000-1007 (2006)
122. Lovisa Hessle, Kristen A. Johnson, H. Clarke Anderson, Sonoko Narisawa, Adnan Sali, James W. Goding, Robert Terkeltaub, Jose Luis Millan: Tissue-nonspecific alkaline phosphatase and plasma cell membrane glycoprotein-1 are central antagonistic regulators of bone mineralization. *Proc Natl Acad Sci U S A* 99, 9445-9449 (2002)
123. Vicky E. Macrae, Megan G. Davey, Lynn McTeir, Sonoko Narisawa, Manisha C. Yadav, Jose Luis Millan, Colin Farquharson: Inhibition of PHOSPHO1 activity results in impaired skeletal mineralization during limb development of the chick. *Bone* 46, 1146-1155 (2010)
124. Neil F. Rebbe, Benton D. Tong, Elizabeth M. Finley, Scot Hickman: Identification of nucleotide pyrophosphatase/alkaline phosphodiesterase I activity associated with the mouse plasma cell differentiation antigen PC-1. *Proc Natl Acad Sci U S A* 88, 5192-5196 (1991)
125. Herman S. Cheung, Indira V. Kurup, John D. Sallis, Lawrence M. Ryan: Inhibition of calcium pyrophosphate dihydrate crystal formation in articular cartilage vesicles and cartilage by phosphocitrate. *J Biol Chem* 271, 28082-28085 (1996)
126. Herman S. Cheung, T.R. Devine, William Hubbard: Calcium phosphate particle induction of metalloproteinase and mitogenesis: effect of particle sizes. *Osteoarthritis Cartilage* 5, 145-151 (1997)
127. Michelle M. Cooke, Geraldine M. McCarthy, John D. Sallis, Maria P. Morgan: Phosphocitrate inhibits calcium hydroxyapatite induced mitogenesis and upregulation of matrix metalloproteinase-1, interleukin-1beta and cyclooxygenase-2 mRNA in human breast cancer cell lines. *Breast Cancer Res Treat* 79, 253-263 (2003)
128. A gene (PEX) with homologies to endopeptidases is mutated in patients with X-linked hypophosphatemic rickets. The HYP Consortium. *Nat Genet* 11, 130-136 (1995)
129. Shiguang Liu, Rong Guo, Qisheng Tu, L. Darryl Quarles: Over-expression of PHEX in osteoblasts fails to rescue the Hyp mouse phenotype. *J Biol Chem* 277, 3686-3697 (2002)
130. Rong Guo, L. Darryl Quarles: Cloning and sequencing of human PEX from a bone cDNA library: evidence for its developmental stage-specific regulation in osteoblasts. *J Bone Miner Res* 12, 1009-1017 (1997)
131. Xiaodong Li, Michael S. Ominsky, Qing-Tian Niu, Ning Sun, Betsy Daugherty, Diane D'Agostin, Carole Kurahara, Yongming Gao, Jin Cao, Jianhua Gong, Frank Asuncion, Mauricio Barrero, Kelly Warmington, Denise Dwyer, Marina Stolina, Sean Morony, Ildiko Sarosi, Paul J. Kostenuik, David L. Lacey, W. Scott Simonet, Hua Zhu Ke, Chris Paszty: Targeted deletion of the sclerostin gene in mice results in increased bone formation and bone strength. *J Bone Miner Res* 23, 860-869 (2008)
132. Theodore A. Craig, Resham Bhattacharya, Debabrata Mukhopadhyay, Rajiv Kumar: Sclerostin binds and regulates the activity of cysteine-rich protein 61. *Biochem Biophys Res Commun* 392, 36-40 (2009)
133. David G. Winkler, Changpu Yu, James C. Geoghegan, Ethan W. Ojala, John E. Skonier, Diana Shpektor, May K. Sutherland, John A. Latham, Noggin and sclerostin bone morphogenetic protein antagonists form a mutually inhibitory complex. *J Biol Chem* 279, 36293-36298 (2004)
134. Harold P. Erickson HP, J. L. Inglesias: A six-armed oligomer isolated from cell surface fibronectin preparations. *Nature* 311, 267-269 (1984)
135. Maurizio Pacifici: Tenascin-C and the development of articular cartilage. *Matrix Biol* 14, 689-698 (1995)
136. Brian K. Hall, Tsutomu Miyake: All for one and one for all: condensations and the initiation of skeletal development. *Bioessays* 22, 138-147, (2000)
137. Erick Forsberg, Emilio Hirsch, Leopold Fröhlich, Michael Meyer, Peter Ekblom, Attila Aszodi, Sabine Werner, Reinhard Fässler: Skin wounds and severed nerves heal normally in mice lacking tenascin-C. *Proc Natl Acad Sci U S A* 93, 6594-6599 (1996)
138. Yumiko Saga, Takeshi Yagi, Yoji Ikawa, Teruyo Sakakura, Shinichi Aizawa: Mice develop normally without tenascin. *Genes Dev* 6, 1821-1831 (1992)
139. Peter S. Rowe, Claudine L. Oudet, Fiona Francis, Christiane Sinding, Solange Pannetier, Mike J. Econs, Tim M. Strom, Thomas Meitinger, Michele Garabedian, Albert David, Marie-Alice Macher, Elisabeth Questiaux, Ewa Popowska, Ewa Pronicka, Andrew P. Read, Agnes Mokrzycki, Francis H. Glorieux, Marc K. Drezner, Andre Hanauer, Hans Leirach, Johnathan N. Goulding, Jeffrey L.H. O'Riordan: Distribution of mutations in the PEX gene in families with X-linked hypophosphataemic rickets (HYP) *Hum Mol Genet* 6, 539-549 (1997)

## Non-collagenous proteins and biomineralization

140. Tim M. Strom, Harald Jüppner: PHEX, FGF23, DMP1 and beyond. *Curr Opin Nephrol Hypertens* 17, 357-362 (2008)
141. Pawel R. Kiela, Faye K. Ghishan: Recent advances in the renal-skeletal-gut axis that controls phosphate homeostasis. *Lab Invest* 89:7-14 (2009)
142. Andrea F. Ruchon, Harriet S. Tenenhouse, Mieczyslaw Marcinkiewicz, Geraldine Siegfried, Jane E. Aubin, Luc DesGroseillers, Philippe Crine, Guy Boileau: Developmental expression and tissue distribution of PHEX protein: effect of the Hyp mutation and relationship to bone markers. *J Bone Miner Res* 15, 1440-1450 (2000)
143. Shiguang Liu, Wen Tang, Jianping Zhou, Luke Vierthaler, L. Darryl Quarles: Distinct roles for intrinsic osteocyte abnormalities and systemic factors in regulation of FGF23 and bone mineralization in Hyp mice. *Am J Physiol Endocrinol Metab* 293, E1636-1644 (2007)
144. Xiuying Bai, Dengshun Miao, Dibiyendu Panda, Scott Grady, Marc D. McKee, David Goltzman, Andrew C. Karaplis: Partial rescue of the Hyp phenotype by osteoblast-targeted PHEX (phosphate-regulating gene with homologies to endopeptidases on the X chromosome) expression. *Mol Endocrinol* 16, 2913-2925 (2002)
145. Brigitte Ecarot, Francis H. Glorieux, Marguerite Desbarats, Rose Travers, L. Labelle: 1992. Effect of dietary phosphate deprivation and supplementation of recipient mice on bone formation by transplanted cells from normal and X-linked hypophosphatemic mice. *J Bone Miner Res* 7, 523-530 (1992)
146. Reinhold Erben, Dagmar Mayer, Karin Weber, Kenneth Jonsson, Harald Jüppner, Beate Lanske: Over-expression of human PHEX under the human beta-actin promoter does not fully rescue the Hyp mouse phenotype. *J Bone Miner Res* 20, 1149-1160 (2005)
147. Shiguang Liu, Peter S. Rowe, Luke Vierthaler, Jianping Zhou, L. Darryl Quarles: Phosphorylated acidic serine-aspartate-rich MEPE-associated motif peptide from matrix extracellular phosphoglycoprotein inhibits phosphate regulating gene with homologies to endopeptidases on the X-chromosome enzyme activity. *J Endocrinol* 192, 261-267 (2007)
148. William N. Addison, Yukiko Nakano, Thomas Loisel, Phillippe Crine, Marc D. McKee: MEPE-ASARM peptides control extracellular matrix mineralization by binding to hydroxyapatite: an inhibition regulated by PHEX cleavage of ASARM. *J Bone Miner Res* 23, 1638-1649 (2008)
149. Aline Martin, Valentin David, Jennifer S. Laurence, Patricia M. Schwarz, Eileen M. Lafer, Anne-Marie Hedge, Peter S. Rowe: Degradation of MEPE, DMP1, and release of SIBLING ASARM-peptides (minhibins): ASARM-peptide(s) are directly responsible for defective mineralization in HYP. *Endocrinology* 149, 1757-1772 (2008)
150. Peter S. Rowe, Naoko Matsumoto, Osk D. Jo, Remi N. Shih, Jeannine Oconnor, Martine P. Roudier, Steve Bain, Shiguang Liu, Jody Harrison, Norimoto Yanagawa: Correction of the mineralization defect in hyp mice treated with protease inhibitors CA074 and pepstatin. *Bone* 39, 773-786 (2006)
151. Hamish Dobbie, Robert J. Unwin, Nuno J.R. Faria, David G. Shirley: Matrix extracellular phosphoglycoprotein causes phosphaturia in rats by inhibiting tubular phosphate reabsorption. *Nephrol Dial Transplant* 23, 730-733 (2008)
152. Joanne Marks, Linda J. Churchill, Edward S. Debnam, Robert J. Unwin: Matrix extracellular phosphoglycoprotein inhibits phosphate transport. *J Am Soc Nephrol* 19, 2313-2320 (2008)
153. Shiguang Liu, Thomas A. Brown, Jianping Zhou, Zhou-Sheng Xiao, Hani Awad, Farshid Guilak, L. Darryl Quarles: Role of matrix extracellular phosphoglycoprotein in the pathogenesis of X-linked hypophosphatemia. *J Am Soc Nephrol* 16, 1645-1653 (2005)
154. Valentin David, Aline Martin, Anne-Marie Hedge, Peter S. Rowe: Matrix extracellular phosphoglycoprotein (MEPE) is a new bone renal hormone and vascularization modulator. *Endocrinology* 150, 4012-4023 (2009)
155. Doron Bresler, Jan Bruder, Klaus Mohnike, William D. Fraser, Peter S.N. Rowe: Serum MEPE-ASARM-peptides are elevated in X-linked rickets (HYP): implications for phosphaturia and rickets. *J Endocrinol* 183, R1-9 (2004)
156. Simonetta Bernocco, Barry M. Steiglitz, Dmitri I. Svergun, Maxim V. Petoukhov, Florence Ruggiero, Sylvie Ricard-Blum, Christine Ebel, Christophe Geourjon, Gilbert Deleage, Bernard Font, Denise Eichenberger, Daniel S. Greenspan, David J.S. Hulmes: Low resolution structure determination shows procollagen C-proteinase enhancer to be an elongated multidomain glycoprotein. *J Biol Chem* 278, 7199-7205 (2002)
157. David J.S. Hulmes, A. Paul Mould, Efrat Kessler: The CUB domains of procollagen C-proteinase enhancer control collagen assembly solely by their effect on procollagen C-proteinase/bone morphogenetic protein-1. *Matrix Biol* 16, 41-45 (1997)
158. Catherine Moali, Bernard Font, Florence Ruggiero, Denise Eichenberger, Patricia Rousselle, Vincent François, Ake Oldberg, Leena Bruckner-Tuderman, David J.S. Hulmes: Substrate-specific modulation of a multisubstrate proteinase. C-terminal processing of fibrillar procollagens is the only BMP-1-dependent activity to be enhanced by PCPE-1. *J Biol Chem* 280, 24188-24194 (2005)
159. Mourad Bekhouche, Daniel Kronenberg, Sandrine Vadon-Le Goff, Cecile Bijakowski, Ngee H. Lim, Bernard



- Font, Efrat Kessler, Alain Colige, Hideaki Nagase, Gillian Murphy, David J.S. Hulmes, Catherine Moali: Role of the netrin-like domain of procollagen C-proteinase enhancer-1 in the control of metalloproteinase activity. *J Biol Chem* 285, 15950-15959 (2010)
160. Barry M. Steigltz, Jaclynn M. Kreider, Elizabeth P. Frankenburg, William N. Pappano, Guy G. Hoffman, Jeffrey A. Meganck, Xiaowen Liang, Magnus Höök, David E. Birk, Steven A. Goldstein, Daniel S. Greenspan: Procollagen C proteinase enhancer 1 genes are important determinants of the mechanical properties and geometry of bone and the ultrastructure of connective tissues. *Mol Cell Biol* 26, 238-49 (2006)
161. Yukiko Nakano, Jennifer Forsprecher, Mari T. Kaartinen: Regulation of ATPase activity of transglutaminase 2 by MT1-MMP: implications for mineralization of MC3T3-E1 osteoblast cultures. *J Cell Physiol* 223, 260-269 (2010)
162. Vincenzo De Laurenzi, Gerry Melino: Gene disruption of tissue transglutaminase. *Mol Cell Biol* 21, 148-155 (2001)
163. Nisha Nanda, Siiri E. Iismaa, W. Andrew Owens, Ahsan Husain, Fabienne Mackay, Robert M. Graham: Targeted inactivation of Gh/tissue transglutaminase II. *J Biol Chem* 276, 20673-20678 (2001)
164. Yukiko Nakano, Hadil F. Al-Jallad, Aisha Mousa, Mari T. Kaartinen: Expression and localization of plasma transglutaminase factor XIIIa in bone. *J Histochem Cytochem* 55, 675-685 (2007)
165. Hadil F. Al-Jallad, Yukiko Nakano, Jeff L.Y. Chen, Erin McMillan, Celine Lefebvre, Mari T. Kaartinen: Transglutaminase activity regulates osteoblast differentiation and matrix mineralization in MC3T3-E1 osteoblast cultures. *Matrix Biol* 25, 135-148 (2006)
166. Esben S. Sørensen, Torben E. Petersen: Phosphorylation, glycosylation, and transglutaminase sites in bovine osteopontin. *Ann N Y Acad Sci* 760, 363-366 (1995)
167. Mari T. Kaartinen, Arja Pirhonen, Annikka Linnala-Kankkunen, Pekka H. Mäenpää: Transglutaminase-catalyzed cross-linking of osteopontin is inhibited by osteocalcin. *J Biol Chem* 272, 22736-22741 (1997)
168. Mari T. Kaartinen, Arja Pirhonen, Annikka Linnala-Kankkunen, Pekka Mäenpää: Cross-linking of osteopontin by tissue transglutaminase increases its collagen binding properties. *J Biol Chem* 274, 1729-1735 (1999)
169. Maria Nurminskaya, Cordula Magee, Lidia Faverman, Thomas F. Linsenmayer: Chondrocyte-derived transglutaminase promotes maturation of preosteoblasts in periosteal bone. *Dev Biol* 263, 139-152 (2003)
170. Filanti C, Dickson GR, Di Martino D, Ulivi V, Sanguineti C, Romano P, Palermo C, Manduca P: The expression of metalloproteinase-2, -9, and -14 and of tissue inhibitors-1 and -2 is developmentally modulated during osteogenesis *in vitro*, the mature osteoblastic phenotype expressing metalloproteinase-14. *J Bone Miner Res* 15, 2154-2168 (2000)
171. Takeshi Itoh, Masatoshi Tanioka, Hiroshi Yoshida, Takayuki Yoshioka, Hirofumi Nishimoto, Shigeyoshi Itoharu: Reduced angiogenesis and tumor progression in gelatinase A-deficient mice. *Cancer Res* 58, 1048-1051 (1998)
172. Robert Pyo, Jason K. Lee, J. Michael Shipley, John A. Curci, Dongli Mao, Scott J. Ziporin, Terri L. Ennis, Steven D. Shapiro, Robert M. Senior, Robert W. Thompson: Targeted gene disruption of matrix metalloproteinase-9 (gelatinase B) suppresses development of experimental abdominal aortic aneurysms. *J Clin Invest* 105, 1641-1649 (2000)
173. Anke Rattenholl, William N. Pappano, Manuel Koch, Douglas R. Keene, Karl E. Kadler, Takako Sasaki, Rupert Timpl, Robert E. Burgeson, Daniel S. Greenspan, Leena Bruckner-Tuderman: Proteinases of the bone morphogenetic protein-1 family convert procollagen VII to mature anchoring fibril collagen. *J Biol Chem* 277, 26372-26378 (2002)
174. Masako Miura, Xiao-Dong Chen, Matthew R. Allen, Yanming Bi, Stan Gronthos, Byoung-Moo Seo, Saquib Lakhani, Richard A. Flavell, Xin-Hua Feng, Pamela G. Robey, Marian M. Young, Songtao Shi: A crucial role of caspase-3 in osteogenic differentiation of bone marrow stromal stem cells. *J Clin Invest* 114, 1704-1713 (2004)
175. Kenn Holmbeck, Paolo Bianco, John Caterina, Susan Yamada, Mark Kromer, Sergei A. Kuznetsov, Mahesh Mankani, Pamela G. Robey, A. Robin Poole, Isabelle Pidoux, Jerrold M. Ward, Henning Birkedal-Hansen: MT1-MMP-deficient mice develop dwarfism, osteopenia, arthritis, and connective tissue disease due to inadequate collagen turnover. *Cell* 99, 81-92 (1999)
176. Kenn Holmbeck, Paolo Bianco, Susan Yamada, Henning Birkedal-Hansen: MT1-MMP: a tethered collagenase. *J Cell Physiol* 200, 11-9 (2004)
177. Kenn Holmbeck, Paolo Bianco, Isabelle Pidoux, S. Inoue, R. Clark Billingham, William Wu, Kali Chrysovergis, Susan Yamada, Henning Birkedal-Hansen, A. Robin Poole: The metalloproteinase MT1-MMP is required for normal development and maintenance of osteocyte processes in bone. *J Cell Sci* 118, 147-156 (2005)
178. Nabil G. Seidah NG, Mayer G, Zaid A, Rousselet E, Nassoury N, Poirier S, Essalmani R, Prat A: The activation and physiological functions of the proprotein convertases. *Int J Biochem Cell Biol* 40, 1111-1125 (2008)
179. Xiaodong Wang, Jih-tung Pai, Elizabeth A. Wiedenfeld, Julio C. Medina, Clive A. Slaughter, Joseph L. Goldstein, Michael S. Brown: Purification of an

## Non-collagenous proteins and biomineralization

interleukin-1 beta converting enzyme-related cysteine protease that cleaves sterol regulatory element-binding proteins between the leucine zipper and transmembrane domains. *J Biol Chem* 270, 18044-18050 (1995)

180. Guimin Guan, Pei-Hua Dai, Timothy F. Osborne, Jae B. Kim, Ishaiah Shechter: Multiple sequence elements are involved in the transcriptional regulation of the human squalene synthase gene. *J Biol Chem* 272, 10295-102302 (1997)

181. Schröder M: Endoplasmic reticulum stress responses. *Cell Mol Life Sci* 65, 862-894 (2008)

182. Tomohiko Murakami, Shinichi Kondo, Maiko Ogata, Soshi Kanemoto, Atsushi Saito, Atsushi Wanaka, Kazunori Imaizumi: Cleavage of the membrane-bound transcription factor OASIS in response to endoplasmic reticulum stress. *J Neurochem* 96, 1090-1100 (2006)

183. Tomohiko Murakami, Atsushi Saito, Shin-ichiro Hino, Shinichi Kondo, Soshi Kanemoto, Kazuyasu Chihara, Hiroshi Sekiya, Kenji Tsumagari, Kimiko Ochiai, Kazuya Yoshinaga, Masahiro Saitoh, Riko Nishimura, Toshiyuki Yoneda, Ikuyo Kou, Tatsuya Furuichi, Shiro Ikegawa, Masahito Ikawa, Masaru Okabe, Akio Wanaka, Kazunori Imaizumi: Signalling mediated by the endoplasmic reticulum stress transducer OASIS is involved in bone formation. *Nature Cell Biol* 11, 1205-1211 (2009)

184. Taranpreet K. Chandhoke, Yu-Feng Huang, Fei Liu, Gloria A. Gronowicz, Douglas J. Adams, John R. Harrison, Barbara E. Kream: Osteopenia in transgenic mice with osteoblast-targeted expression of the inducible cAMP early repressor. *Bone* 43, 101-109 (2008)

185. Kornelia Schlombs, Thomas Wagner, Jochen Scheel: Site-1 protease is required for cartilage development in zebrafish. *Proc Natl Acad Sci U S A* 100, 14024-14029 (2003)

186. Debabrata Patra, Xiaoyun Xing, Sherri Davies, Jennifer Bryan, Carl Franz, Ernst B. Hunziker, Linda J. Sandell: Site-1 protease is essential for endochondral bone formation in mice. *J Cell Biol* 179, 687-700 (2007)

187. Jian Yang, Joseph L. Goldstein, Robert E. Hammer, Young-Ah Moon, Michael S. Brown, Jay D. Horton: Decreased lipid synthesis in livers of mice with disrupted Site-1 protease gene. *Proc Natl Acad Sci U S A* 98, 13607-13612 (2010)

188. Jeff P. Gorski, Nichole T. Huffman, Sridar Chittur, Ronald J. Midura, Claudine Black, Julia Oxford, Nabil G. Seidah: Inhibition of proprotein convertase SKI-1 blocks transcription of key extracellular matrix genes regulating osteoblastic mineralization. *J Biol Chem* 286, (2011) [Epub ahead of print]

**Abbreviations:** BMF, biomineralization foci; BSP, bone sialoprotein; AEBSF, 4-(2-aminoethyl) benzenesulfonyl fluoride hydrochloride; SKI-1, site-1, MBTPS1, or

subtilisin/kexin isoenzyme-1; PCOLCE1, procollagen C-terminal propeptidase enhancer1; 1,25-vit. D3-MARRS protein, membrane associated, rapid response steroid binding receptor; BMP, bone morphogenetic protein; TGase, transglutaminase; ADHR, X-linked hypophosphatemia, autosomal dominant hypophosphatemic rickets; XLH, X-linked hypophosphatemia; ARHP, autosomal recessive hypophosphatemia; HHRH, hereditary hypophosphatemic rickets with hypercalciuria; ENPP1, PC-1, ectonucleotide pyrophosphatase/phosphodiesterase; Fetuin, alpha<sub>2</sub>HS-glycoprotein; TNAP, tissue nonspecific alkaline phosphatase; DMP1, dentin matrix protein 1; OPN, osteopontin; NTD, N-terminal domain; GLA, gamma-carboxyglutamic acid; SIBLING, small integrin-binding ligand, N-linked glycoprotein; BGP, beta-glycerolphosphate; MMP, matrix metalloproteinase; BAG-75, bone acidic glycoprotein-75; PC, proprotein convertase; Osx, osterix; BSA, bovine serum albumin; FBS, fetal bovine serum.

**Key Words:** Biomineralization, PHEX, Phospho 1, Bone sialoprotein, DMP1, Type XI collagen, Fetuin

**Send correspondence to:** Jeff Gorski, Department of Oral Biology, School of Dentistry, University of Missouri-Kansas City, 650 East 25<sup>th</sup> Street, Kansas City, MO 64108, Tel: 816-235-2537, Fax: 816-235-5524, E-mail: gorskij@umkc.edu

<http://www.bioscience.org/current/vol16.htm>